



# SUPERTRX

2024 E-CATALOGUE



**SUPERTRX**

# PRODUCTS

HAIRSTYLING TOOLS

HAIR REMOVAL SOLUTIONS

SKINCARE SOLUTIONS

MAKE UP ACCESSORIES







SUPERTRX

# HAIR STYLING TOOLS

## PRODUCT RANGE

HAIR MULTI-STYLER

THERMAL ROUND BRUSH

AUTOMATIC HAIR CURLER

HAIR STRAIGHTENER

HAIR DRYER



**SUPERTRX**

# 7 IN 1 HAIR STYLER

HAIRDRYER, CURLER, STRAIGHTENER, BLOWDRY BRUSH +



**SR-3226**

**Ionic Hair Dryer brush  
with 7 Attachments**

Folding handle  
1300 Watts  
12 different settings  
2000000/CM3 negative ions  
360° Swivel cord  
110000 rpm BLDC Motor





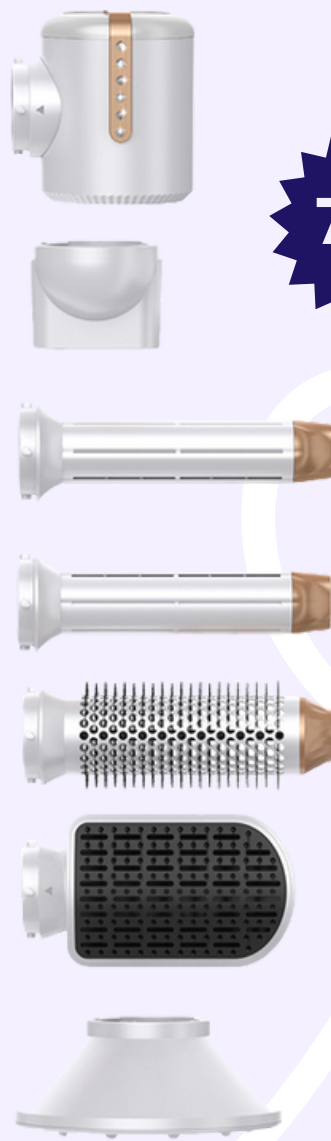
**SUPERTRX**

# 7 IN 1 HAIR STYLER

HAIR DRYER, CURLER, STRAIGHTENER, BLOW DRY BRUSH +



FC CE UL RoHS



## SR-626 (with diamonds) 7 in 1 Hair Styler

Color: Black/White Gold  
Product Size: Length 287mm\* Max Diameter 46mm  
Power: 1100/1400W, 110/220V, 50-60 HZ  
Performance: Wind speed 16m/s, wind pressure 108g, noise 84 db  
Heating Element: Heating wire Temperature: First gear room temperature, second gear 70°C, third gear 110°C  
Wind speed gear: 3  
Power cord length: 2 meters



## SR-626 7 in 1 Hair Styler

Color: Black/White Gold  
Product Size: Length 287mm\* Max Diameter 46mm  
Power: 1100/1400W, 110/220V, 50-60 HZ  
Performance: Wind speed 16m/s, wind pressure 108g, noise 84 db  
Heating Element: Heating wire Temperature: First gear room temperature, second gear 70°C, third gear 110°C  
Wind speed gear: 3  
Power cord length: 2 meters

FC CE UL RoHS



**SUPERTRX**

# 6 IN 1 HAIR STYLER

HAIRDRYER, CURLER, STRAIGHTENER, BLOWDRY BRUSH +



**6in1**

## **SR-623** **6 in 1 Hair Styler**

Color: Black/Gold  
Product Size: Length 210mm\*  
Max Diameter 52.4mm  
Power: 800/1000W, 110/220V,  
50-60 HZ  
Performance: Wind speed  
13m/s, wind pressure 68g,  
noise 88 db  
Heating Element: Heating wire  
Temperature: First gear 50°C,  
second gear 78°C, third gear  
105°C  
Wind speed gear: 1  
Power cord length: 2 meters

**6in1**



## **SR-626-3** **6 in 1 Hair Styler**

MOQ 500pcs  
Product size: Length 287MM\*  
Maximum diameter 46MM  
Power: 1100/1400W, 110/220V,  
50-60HZ  
Performance: Wind speed  
17M/S wind pressure 122g  
Noise 84db  
Heating element: heating wire  
Temperature: room  
temperature, 70°C, 110°C  
Wind speed gear: 3  
Power cord length: 2 meters

FC CE UL RoHS

FC CE UL RoHS



SUPERTRX

# HAIR MULTI-STYLER

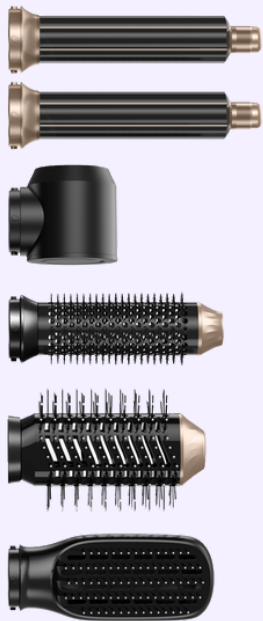


6in1

## SR-623-2 6 in 1 Hair Styler

MOQ: 500 pcs  
Product Size: Length 287mm\*  
Max Diameter 46mm  
Rated Voltage: 110/220V  
Rated Frequency: 50-60 HZ  
Power: 1100/1400W  
Performance: Wind speed 17m/s, wind pressure 122g, noise 84 db  
Heating Element: Heating wire  
Temperature: First gear room temperature, second gear 70°C, third gear 110°C  
Wind speed gear: 3  
Power cord length: 2 meters

FC CE UL RoHS

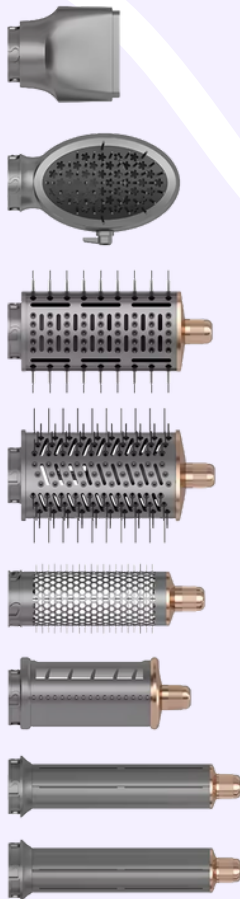


8in1

## SR-633 8 in 1 Hair Styler

Color: Black/White Gold  
Product Size: Length 287mm\*  
Max Diameter 46mm  
Rated Voltage: 110/220V  
Rated Frequency: 50-60 HZ  
Power: 1100/1400W  
Performance: Wind speed 17m/s, wind pressure 122g, noise 84 db  
Heating Element: Heating wire  
Temperature: First gear room temperature, second gear 70°C, third gear 110°C  
Wind speed gear: 3  
Power cord length: 2 meters

FC CE UL RoHS



6in1

## SR-750 6 in 1 Hair Styler

Product Size: Length 380mm\*  
Rated Voltage: 220V  
Power: 1050W  
Wind speed gear: 3  
Power cord length: 2.5 meters





**SUPERTRX**

# HAIR MULTI-STYLER



**5in1**

## **SR-622 5 in 1 Hair Styler**

Regular color: Gray/White gold  
Product host size: length 210\*  
maximum diameter 52.4MM  
Rated voltage: 110/220V  
Rated frequency: 50/60HZ  
Power: 800/1000W(maximum real  
power 900-950W)  
Performance: Wind speed 12.5M/S  
Wind pressure: 68g  
Noise: 88db  
Heating element: heating wire  
Temperature: First gear 50°C  
second gear 78°C third gear 105°C  
Wind speed gear: 1 gear  
Power cord length: 2 meters



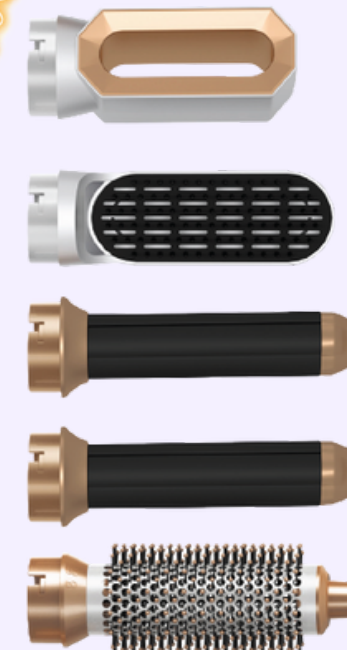
FC CE UL RoHS



**5in1**

## **SR-618 5 in 1 Hair Styler**

Color: Gray/White gold  
Product host size: length 210\*  
diameter 46.4MM  
Rated voltage: 110/220V  
Rated frequency: 50-60HZ  
Power: 800/1000W(maximum real  
power 900-950W)  
Performance: Wind speed 13M/S  
wind pressure 71g Noise 89db  
Heating element: heating wire  
Temperature: First gear 50°C,  
second gear 70°C, third gear 100°C  
Wind speed gear: 1 gear  
Power cord length: 2 meters



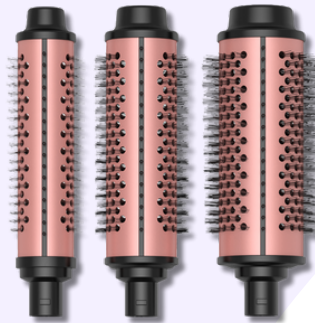
FC CE UL RoHS



**SUPERTRX**

# THERMAL ROUND BRUSH

**3in1**



## SR-162

### 3in 1 Thermal Round Brush Set

RColor: Black/Gold  
Voltage/Power: 100-240V, 50/60HZ, 90W  
6-speed temperature display  
Safety Features: 60 min automatic shutdown  
Heating body: double PTC  
Power cord length: 2.4 meters  
Three round brush sizes: 30mm, 38mm, 45mm

FC CE UL RoHS



## SR-2032

### Thermal Round Brush Set

Voltage/Power: 100-240V, 50/60HZ, 40W  
Temperature: 3 adjustable levels of 170-190-190°C  
Safety Features: temperature lock, 60 min automatic shutdown  
Heating body: double PTC  
Power cord length: 2.5 meters, 360° tangle-free swivel cord  
Three round brush sizes: 32mm, 38mm, 45mm



## SR-742

### Heated Blowdry Brush

2 volumizing thermal barrel brushes, suitable for thick/thin hair  
Voltage/Power: 220V, 1500W  
Power cord length: 2.5 meters





**SUPERTRX**

# HAIR STYLING SETS



2 pcs

## SR-2315 + SR3136 Hair Straightener & Blowdry Brush Combo

Straightener: 100-240V, 52W, PTC heating  
Blowdry Brush: 100-240V, dual voltage,  
1250W, thress temperature setting, DC  
motor, low noise

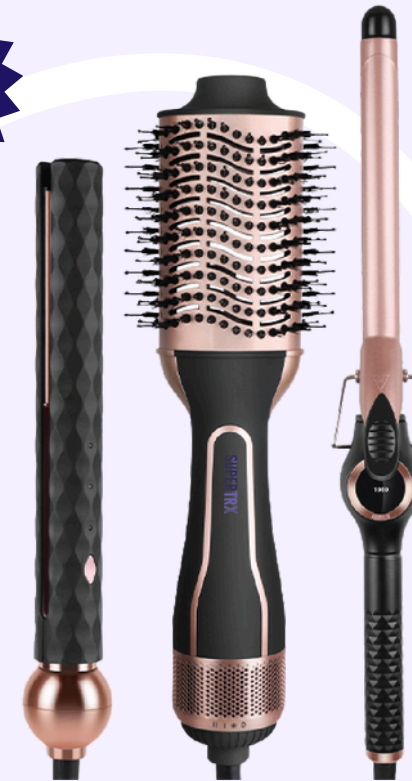
## SR-3132 Hair Styling Tools Set

Straightener: Nano titanium coated, 30 cm,  
4.8cm plate, max temp 210°C, 110-240Vm  
55/65W, 2.5m cord  
Curler: Nano titanium coated,, 40 cm,  
25mm iron, max temp 210°C, 110-240V,  
55/65W, 2.5m cord  
Comb: Nano titanium coated, 30\*5.5cm,  
max temp 210°C, 110-240Vm 55W, 2.5m cord



3 pcs

3 pcs



## SR-3311 Hair Styling Tools Set

Curler: Nano titanium coating brings  
shinier results, 40cm, 20mm iron, 110-240V,  
50W, 2.5 cord  
Straightener: 29cm, 2.8cm plate, 110-240V,  
45-55W, 2.4m cord  
Brush: Nano titanium coating brings shinier  
result, 31\*10.5 cm, 220V, 1100W

3 pcs



## SR-6035A Hair Styling Tools Set

Straightener: 27cm, 3.8cm plate, 110-240V,  
50W, 2.5m cord  
Curler: 38cm, 26mm iron, digital display,  
110-240V, 50W, 2.5m cord  
Dryer: 21\*21\*10cm, 220V, 1650W, 2 heats, 2  
speeds, 2.5m cord



**SUPERTRX**

# HEATED ROUND BRUSH



**SR-1267**  
**Heated Round Brush**

Voltage: 100-240V, 45W  
LCD display, 10 temperature  
settings, 140-210°C, 38mm  
barrel, 2 PTC



**SR-3136**  
**Heated Round Brush**

Voltage: 100-240V, dual voltage, 1250W  
3 Temperature settings  
DC Motor, low noise



**SR-014**  
**Heated Round Brush**

Product Size: Conventional  
330\*106mm, Mini 319\*96mm  
rPower: 102/220V, 50-60HZ, US  
Standard 800W, European  
Standard 1000W  
Temperature: 50/80/100°C  
Wind Comb Gear: 1  
Power Cord Length: 2m



**SR-1266**  
**Heated Round Brush**

Voltage: 100-240V, 45W  
LCD display, 10 temperature  
settings, 140-210°C, 38mm  
barrel, 1 PTC



**SUPERTRX**

# HAIR DRYER BRUSH



## **SR-1288** **Hair Dryer Brush**

Power: High 1200W, Low 600W,  
Cool 260W  
PTC Heating  
Button Life: 30000 times  
Product Life: 150+ Hours



## **SR-3128** **Hair Dryer Brush**

Power: High 1200W, Low 600W,  
Cool 260W  
PTC Heating  
Button Life: 30000 times  
Product Life: 150+ Hours





**SUPERTRX**

# HAIR DRYER BRUSH



**Ionic**

## **SR-1032 Ionic Hair Straightener Brush**

Power: 100-240V, 50/60HZ, 45W  
Temperature: 11 heat levels, 130-230°C  
Display: LCD digital display  
Heaters: Dual MCH  
Product Size: 250\*59\*43.6mm  
Net Weight: 327g  
Power Cord: 1.8m, 360° tangle-free swivel cord  
Plug: UK Plug  
Safe Mode: Temperature auto lock, 1 hour auto turn off



**Ionic**

## **SR-FS01 Hot Air Straightening Brush**

The 3 in 1 hair dryer and volumizer is a great combination of hair dryer, hair straightener and hair comb that allows you to both dry and style your hair with one tool.

Ceramic and Tourmaline hot air brush provides even heat distribution to avoid heat damage to your hair.

The ion generator produces 50 million negative ions to achieve silky and healthy hair.

CE SGS UK CA

**Ionic**



## **SR-3168 Ionic Hair Dryer Brush**

Power: 700W  
PTC Heating  
One button, 3 settings  
Button Life: 30000 times  
Product Life: 150+ Hours



**SUPERTRX**

# HAIR DRYER BRUSH



## **SR-Z07** **Ionic Hair Dryer Brush**

Advanced Ionic Technology  
Temperature: 3 temperature settings,  
320°F-360°F-410°F  
Power Cord: 2.5 meters, 360° power cord  
30S rapid preheating  
Automatic Switch off after 60 mins

CE SGS UK  
CA



## **SR-3168** **Ionic Hair Dryer Brush**

Power: 700W  
PTC Heating  
One button, 3 settings  
Button Life: 30000 times  
Product Life: 150+ Hours



## **SR-3168** **Ionic Hair Dryer Brush**

Power: 700W  
PTC Heating  
One button, 3 settings  
Button Life: 30000 times  
Product Life: 150+ Hours



## **SR-3168** **Ionic Hair Dryer Brush**

Power: 700W  
PTC Heating  
One button, 3 settings  
Button Life: 30000 times  
Product Life: 150+ Hours



**SUPERTRX**

# HAIR DRYER BRUSH



## **SR-1020**

### **Ionic Hair Straightener Brush**

Power: 100-240V, 50/60Hz, 45W  
Temperature: 11 heat levels: 130-230°C  
Display: LCD digital display  
Heaters: Dual MCH  
Bristle Type: Ceramic  
Product Size: L250\*W59\*H43.6mm  
Net Weight: 327g  
Power Cord: 1.8m 360° tangle-free swivel cord  
Plug: UK plug  
Safe Mode: Temperature auto lock, 1 hour auto shutoff

**Ionic**



## **SR-501**

### **Air Dryer Brush**

Air Dryer Brush  
Power: 220-240V, 50-60Hz, 1000-1200W  
Temperature Settings: 0-cool-heat-1-2  
Aluminium brush  
1pc aluminium heating plate  
PTC heater  
360° Swivel cord  
PVC power cord visible 1.80m



## **SR-1025**

### **Ionic Hair Straightener Brush**

Power: 100-240V, 50/60Hz, 45W  
Temperature: 11 heat levels: 130-230°C  
Display: LCD digital display  
Heaters: Dual MCH

Bristle Type: Ceramic  
Product Size: L253\*W61\*H42mm  
Net Weight: 330g  
Power Cord: 1.8m 360° tangle-free swivel cord  
Plug: UK plug  
Safe Mode: Temperature auto lock, 1 hour auto shutoff



## **SR-067**

### **Hair Straightener Comb**

Power: 100-200V, 50/60 HZ, 35W  
Heating agent: PTC  
Temperature: Maximum temperature 220°C  
Power cord length: 1.8M



## **SR-7060**

### **Tourmaline Ceramic Coating Heating Plate Film Heater**

1pc 21700 lithium batteries, 4200mAh Charge time: 4hours  
Discharge time: 35mins  
2 temp settings 180/210°C  
LED indicator with infrared  
Type C charging port 4C GB Pack  
Voltage: 100-240V  
Power: 50W



**SUPERTRX**

# HAIR CURLER



## **SR-123**

### **Auto Hair Curler**

Rated voltage: 110-240V

Rated frequency: 50/60HZ

Power: 35W

Heating agent: PTC

Temperature: 160/180/200/220°C

Rod size: 22mm

Power cord length: 1.8 m

**FC CE UL RoHS**



## **SR-1388**

### **Automatic Hair Curler**

Power: 50W

Temperature control: 150°-200°

Time Setting: 8S-18S

Left/right curling direction

Motor Life300H

Battery: 2\*2500MAH



## **SR-1965**

### **Auto Hair Curler**

Power: 110v-240v, 39w

Product Size: 28cm

1-inch iron

Diamond coating  
reducing heat damage  
to hair

2-way curling

Power: 110v-240v, 39w

2.5m cord





**SUPERTRX**

# HAIR CURLER

**Ionic**



## **SR-2020 Digital Automatic Hair Curler**

Power: 100-240V, 50/60Hz, 32W  
Temperature: 5 heat levels: 150-230°C  
Display: LCD digital display  
Heaters: Dual PTC  
Barrel Size:  $\phi 28 \times L50$ mm  
Advanced motor system with lower noise  
2 rotating directions for inner and outer-face curls  
Detachable chamber for easy cleaning  
Product Size: L265\*W59\*W59mm  
Power Cord: 2.5m 360° tangle-free swivel cord  
Plug: UK plug

**Ionic**



## **SR-2035 Digital Ionic Rotating Automatic Hair Curler**

Display: LCD digital display  
Heaters: Dual PTC  
Barrel Size:  $\phi 32 \times L80$ mm  
Advanced motor system with lower noise  
2 rotating directions for inner and outer-face curls  
Extra long barrel for smooth longer hair styling  
Power Cord: 2.5m 360° tangle-free swivel cord  
Plug: UK plug  
Safe Mode: Smart Automatic indication sound system, 1-hour auto shutoff

**Ionic**



## **SR-2031 Digital Ionic Automatic Hair Curler**

Power: 100-240V, 50/60Hz, 30W  
Temperature: 5 Heat Levels: 150-170-190-210-230°C  
Display: LCD digital display  
Heaters: Dual PTC  
Barrel Size:  $\phi 32 \times L60$ mm  
Multi-direction curl action  
Detachable chamber for easy cleaning  
Product Size: L268\*W58.9\*W58.9mm  
Power Cord: 2.5m 360° tangle-free swivel cord  
Plug: UK plug



**SUPERTRX**

# HAIR CURLER



## **SR-7058A Hair Curler**

Voltage: 220V-240V 50/60hz  
Power: 60W, 2M wire + BS plug  
Temperature: 220°C max (adjustable)  
Color: Black/Pink  
360° Swivel power cord  
PTC Heater Fast & Safe Heating



## **SR-D10B Automatic Hair Curler**

Ceramic Rotating Barrel  
3 Temperature display:  
160°C-180°C-210°C  
60 Min Automatic shut-off  
Power cord: 2m cable,  
360°swivel cord  
Left & right Directional  
Buttons



## **SR-1816 Ionic Automatic Hair Curler**

Power: 100-240V, 60W  
5 temperature setting, 140°C-220°C  
LED display  
60minutes automatic shutdown  
Power Cord: 2m



## **SR-D06A Hair Curler**

Power: 110v-240v , 50-60Hz, 70W  
Temperature: 80-210°C  
Transparent LCD display  
2 Safety PTC heater, fast heat up  
2.5M 360° swivel cord prevents tangling and keeps  
you on the move flexibly.  
Ergonomic heat-resistant design.  
25MM circular ceramic coating barrel, 32MM oval  
barrel can be chosen.





**SUPERTRX**

# HAIR CURLER



## **SR-7070 Hair Curler**

Voltage: 220V-240V 50/60hz  
Power: 60W, 2M wire + BS plug  
360° Swivel power cord  
Color: Black / Customized  
Digital display, PTC Heater  
Fast & Safe Heating  
Temperature: 230°C max



## **SR-7068 Hair Curler**

Power: 100-240V, 40W  
Temperature: 3-speed temperature control, 160°C/180°C/210°C  
30 seconds rapid heating  
PTC heated and ceramic glazed coated aluminium tube  
60 mins Automatic shutdown feature



## **SR-668-25 Hair Curler**

Power: 110-240V, 50-60Hz, 60W  
Temperature control by Digital Display  
Temperature: 100/ 120/140/160/180/210°C  
PTC heating element  
360 degrees swivel power cord  
Curling diameter: 25mm  
Curling length: 180mm  
Fahrenheit conversion  
Automatic Lock in 5 seconds  
Rubber power cord visible 1.80m with VDE plug

CE RoHS EMC ErP



## **SR-667-9 Hair Curler**

Power: 110-240V, 50-60Hz, 60W  
Temperature control by LED indicator light: 130/150/170/190/200°C  
PTC heating element  
360 degrees swivel power cord  
Tube diameter: 9mm  
Curling length: 170mm  
Fahrenheit conversion  
Other tube diameter for choice: 9, 19 mm (Curling length 180mm)  
Rubber power cord visible 1.80m with VDE plug

FC CE UL RoHS



**SUPERTRX**

# HAIR CURLER



## **SR-0330B Automatic Hair Curler**

Voltage: 110-220V, 50/60Hz  
Power: 48W/52W/55W  
Size: 25mm, 28mm, 32mm  
Temperature: 100 °C - 210 °C  
Heating method: PTC  
360° swivel cord  
LED digital display  
1 hour automatic shutdown function



## **SR-667A Three Barrel Hair Curler**

Power: 110-240V, 50-60Hz, 125W  
Temperature range: 130/150/170/190°C  
PTC heating element  
360 degrees swivel power cord  
Curling length: 122mm  
Tube diameter: 25mm  
Rubber power cord visible 1.80m with  
VDE plug

**FC CE UL RoHS**



## **SR-668-25 Hair Curler**

Power: 100-240V~, 50/60Hz, 60W  
Temperature: 11 heat levels: 130-230°C  
Display: LCD digital display  
Heaters: PTC  
Barrel Size:  $\varnothing 25 \times L153\text{mm}$   
Advanced motor system with lower noise  
2 rotating directions for inner and outer-face  
curls  
Power Cord: 2.5m, 360° tangle-free swivel cord  
Plug: UK plug



## **SR-002A 3 Barrel Hair Curler**

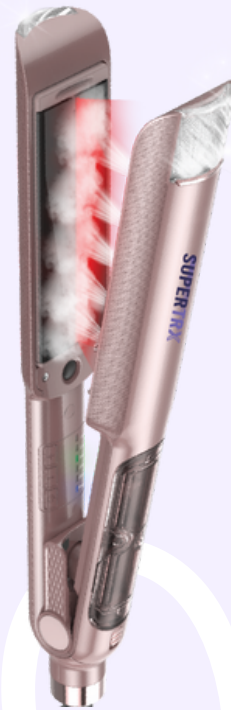
Power: 110-240V, 50-60Hz, 75-85W  
Max temp: 200°C  
PTC heating element  
360 degrees swivel power cord  
Curling length: 122mm  
Tube diameter: 25mm  
Rubber power cord visible 1.80m with  
VDE plug

**FC CE UL RoHS**



**SUPERTRX**

# HAIR STRAIGHTENER



## **SR-088B**

### **Steam Infrared Hair Straightener**

Power: 100-240V, 50/60Hz, 70W  
Temperature 150-230°C, 5 temperature adjustment  
Power Cord: 2.5M, 360° swivel cord  
LED display  
PTC heating  
Two levels of water vapour adjustment  
The capacity of the water tank is 10ml  
Infrared lock hair moisture  
39\*106 mm wide heating plate  
Automatic safety shut-off after 1 hour

CE SGS UK CA



## **SR-8288**

### **Hair Straightener**

Power: 110-240V, 50-60Hz, 50W  
Plate size: 24x110mm  
Temperature control with indicator light display with 4 heat settings: 150/170/190/210°C  
PTC heating element  
360 degrees swivel power cord  
Auto-off protection (After 40 mins)  
PVC power cord visible 1.80m with VDE plug

CE RoHS EMC  
ErP CB

## **SR-088PLUS**

### **Steam Infrared Hair Straightener**

The steam release brings your hair unbelievable shine and smoothness, protects hair from heat damage;  
Infrared heating technology protects your hair from over drying, keeps hair healthy by sealing moisture and adds a silky shine

Power: CE-120-185W, CETL-100W  
6 temperature settings: 150-235°C  
2-inch wide heating plate  
Automatic safety shut-off after 1 hour;  
Power Cord: 2.5M, 360° swivel cord  
PTC heating

LED display

Two levels of water vapor adjustment, combined with infrared rays

The capacity of the water tank is 10ml

cSGS,GS,CE,CB certificate approval.



CE SGS CB



**SUPERTRX**

# HAIR STRAIGHTENER



## **SR-2315 Hair Straightener**

Power: 100-240V, 52W,  
PTC heating  
No temperature control



## **SR-088A Steam Hair Straightener**

2 steam settings vapor-blast hair with  
unbelievable shine and smoothness;  
6 temperature-lock settings provide the  
perfect finish for your hair type  
1.25 inch Tourmaline Ceramic coating  
Automatic safety shut-off after 1 hours  
Power Cord: 2.5M, 360° swivel cord

CE SGS UK  
CA



## **SR-040 Steam Hair Straightener**

Power: 100-240V, 50/60Hz, 65W  
Heating agent: PTC  
Temperature: Maximum  
temperature 230°C  
Power cord length: 1.8M

CE



## **SR-109 Hair Straightener**

Power: 110-240V, 50-60Hz, 40W  
Plate size: 24x110mm  
Temperature control with indicator light  
display with 4 heat settings:  
150/170/190/210/230°C  
PTC heating element  
360 degrees swivel power cord  
Auto-off protection (After 40 mins)  
PVC power cord visible 1.80m with VDE plug

CE RoHS EMC  
ErP CB





# SUPERTRX HAIR DRYER



**Ionic**

**SR-3235**  
**BLDC Ionic 3 in1**  
**Dual Voltage Hair Dryer**

Power: 2000-2200W (Dual Voltage)  
3 speed and 4 temperature settings  
200000000/cm3 negative ions



**Ionic**

**SR-3238**  
**BLDC Ionic 5 in 1 Hair Dryer**

Power: 1800W  
5 nozzles  
3 speed and 4 temperature settings  
200000000/cm3 negative ions





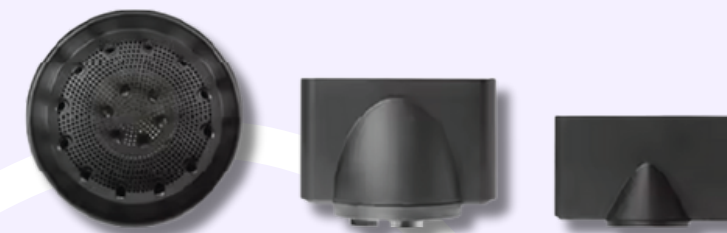
# SUPERTRX HAIR DRYER



## SR-F06 BLDC Ionic 3 in 1 Hair Dryer

**Ionic**

Powerful BLDC Digital Motor: 110,000 rpm/min  
Temperature: Room temp -60-90-120°  
Three Airflow controls: Low-Middle -High speed  
Negative Ion:  $\geq 50$  Million/cm<sup>3</sup>  
Max power: 1200W (energy saving)  
Low Noise: 78 dB  
Reverse cleaning function(auto cleaning function)  
Portable Smart size: 7.48\*6.45\*1.70 inch  
Light weight: 300g (without cable)  
Cable length: 2.5 meters  
Air pressure:  $\geq 105$ g  
Airspeed:  $\geq 25$  meters/second  
360° rotating magnetic styling accessories: 2 nozzles and 1 diffuser  
Memory feature: start with your preferred setting  
Advanced double-layer protection air inlet filter  
Over-temperature protection function  
LCD Screen



## SR-F07 BLDC Ionic 3 in 1 Hair Dryer

**Ionic**

Powerful BLDC Digital Motor: 110,000 rpm/min  
Temperature: Room temp -60-90-120°  
Three Airflow controls: Low-Middle -High speed  
Negative Ion:  $\geq 50$  Million/cm<sup>3</sup>  
Max power: 1200W (energy saving)  
Low Noise: 78 dB  
Reverse cleaning function(auto cleaning function)  
Portable Smart size: 7.48\*6.45\*1.70 inch  
Light weight: 300g (without cable)  
Cable length: 2.5 meters  
Air pressure:  $\geq 105$ g  
Airspeed:  $\geq 25$  meters/second  
360° rotating magnetic styling accessories: 2 nozzles and 1 diffuser  
Memory feature: start with your preferred setting  
Advanced double-layer protection air inlet filter  
Over-temperature protection function  
LCD Screen





# SUPERTRX HAIR DRYER



## SR-2029 High Speed Hair Dryer

High-speed motor  
Hollow design air flow  
3 Wind speeds  
110000 RPM powerful AC motor  
Max wind speed: 21m/s  
Power: 100-240V, 50W  
U-Shaped heating wire for evenly distributed heat



Ionic

## SR-195 High Speed Ionic Hair Dryer

Power: 1400W  
Motor Speed: 11W rpm  
Max wind speed: 20m/s  
Noise: 75db  
Weight: 340g  
Power cord length: 1.6 m  
VDE Plug  
3 Wind speeds  
4 temperature settings

CE RoHS EMC LVD

## SR-111 Hair Dryer

Product Size: 23\*21\*9cm  
Power: 220V, 1650W  
2 heats, 2 speeds, cold shot  
Power Cord: 2.5m cord





**SUPERTRX**

# HAIR REMOVAL SOLUTIONS



## **SR-6188** **Multi-function 5 in 1** **Electric Hair Shaver**

Power: 3w  
Battery: 3.7v 350mah  
Charging time: 1 hour  
Discharge time: standby for 1 year  
Working time for 60 minutes  
Charging voltage: charging 5vd.c 1000ma  
Motor specification: motor: ff-180sh  
Motor speed: (rpm): 7000rpm  
Motor lifespan (hours): 200 hours  
Waterproof rating: ipx5  
Gear: 1



## **SR-SFH07** **Lipstick Shape Epilator**

Size: 3.5\*10\*17.5cm / 78.5g  
Material: ABS  
Power: 5W  
Voltage: 5V  
Operated by rechargeable lithium battery  
Battery capacity: 100mAh  
Charging time: 2 hours  
Using time: 8 hours  
Accessories: USB cable + 1pc cleaning brush



## **SR-1618** **Laser Hair Shaver**

Smooth and Clean skin  
Dual Use For Hair Removal And Shaving  
Elegant and fashionable body design  
Painless Face Leg Body Arm Remover hair removal  
Solve hair embarrassment, Safe on All skin types





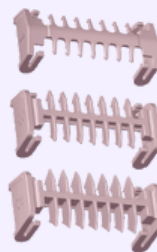
**SUPERTRX**

# HAIR REMOVAL SOLUTIONS



## **SR-287** **Rechargeable Female Razor**

IPX6 Fully Washable  
2 in 1 kit, Extra Add: A Nose Trimmer  
Dual-Sided Blade  
Lithium Battery 500MAH, Charge 90 mins  
Running Time 100 Minutes  
Type-C Charge  
4 Attachment Combs (1/2/4/6MM), Cleaning  
Brush\*1, Lubricate Oil\*1,  
USB Charging Wire\*1



Attachment  
Combs



USB Charging  
Wire



Cleaning  
Brush



Lubricate  
Oil



## **SR-060** **Waterproof Female Razor**

Fully Washable IPX 7 lady shaver  
Lithium Battery 600 mAH, Fast Charge 2  
Hours, 90 min run-time  
Type-C Charge  
Dual Shaver Blades, R-straight razor, Arc  
cutter razor, Mesh razor  
Dual Voltage 3W  
Type-C Charging



## **SR-BT02** **4 in 1 Epilator**

4 in 1 lady epilator, shaver, trimmer, callus  
remover  
1.2V NI-MH 600mha\*2 rechargeable batteries  
Motor: 8500RPM  
Motor: 8500RPM  
Low/high switch  
Adaptor charger  
8-hour charging time, 45 minutes working



**SUPERTRX**

# RED LIGHT THERAPY



## **SR-1626 Red Light Beauty Wand**

A variety of phototherapy modes, adapt to a wide range of people, suitable for various health needs to create perfect skin.

EMS: increase the elasticity of the skin, shrink visible pores, and tighten the skin.



## **SR-1632 Heated Red Light Beauty Wand**

Multi-color Phototherapy  
Stimulate collagen regeneration, restore skin vitality  
Micropulse EMS  
Promote blood circulation and muscle exercise, increase skin elasticity, and achieve skin contraction and skin tightening  
Thermal Therapy  
Massage head can automatically heat to accelerate blood flow circulation, enhance skin vitality  
High-Frequency Vibration: frequency of 12,000, promotes nutrient absorption  
360° Rotating Massage  
Intelligent induction: skin recognition function  
massage head will start vibration when touching the skin



## **SR-1633 EMS Beauty Device**

EMS: lift face, shape V-face  
Red light+Blue light therapy  
Hot compress to promote essence absorption





**SUPERTRX**

# FACIAL CLEANSING



## **SR-SA55** **Silicone Facial Cleanser**

Product size: 7.9\*10.9\*3.3cm  
Material: silicone+ABS  
Power: 0.15W  
Voltage: 3V  
Current: 0.05A  
Function: 4 adjustment modes (different vibration frequencies)  
Waterproof: IPX7  
Operated by rechargeable lithium battery  
Battery capacity: 350mAh  
Speed: 6800r/min  
Accessories: USB



## **SR-SA76** **3 in 1 Facial Cleansing Massager**

Product size: 16.5\*5.8cm  
Material: ABS+hardware+Silicone  
Power: 0.45W/first gear 2.1W/second gear  
Speed: 2800/first gear 3100/second gear  
Voltage: 3V  
Current: 670MA/first gear 720MA/second gear  
Operated by 2\*AA battery  
Accessories: 3pcs brush heads+base  
Function: two-speed; deep cleaning  
Waterproof: IPX5



## **SR-SA6204** **4 in 1 Facial Cleansing Massager**

Product size: 8.5\*17\*5cm  
Material: ABS+hardware  
Power: 2W  
Voltage: 5.8V  
Current: 0.32A  
Waterproof: IPX5  
Operated by 4\*AA battery  
Battery specifications: LLR6AM3/1.5  
Working time: 4.5H  
Speed: 367rmp  
Accessories: 4 pcs brush heads  
Function: two-speed; deep cleaning



**SUPERTRX**

# FACIAL TOOLS



**SR-SKM51**  
**Stainless Steel Facial Shovel Knife**

Stainless steel 304 + ABS  
Size of product: 55\*66\*23mm  
Colors: pink, yellow, blue, green,  
orange, black and white color for  
handle



**SR-SFD21**  
**Soft Cleansing Brush**

Product  
size:11.4\*2.4\*2.2cm/12.9g  
Material: ABS  
Voltage: 1.5V  
Current: 2A  
Function: High-frequency  
vibration, intelligent induction  
Operated by 1\*AAA battery



**SR-SKM52**  
**Stainless Steel Facial  
Shovel Knife**

Stainless steel 304 + ABS  
Size of product:  
55\*65\*23mm



**SR-SA2504**  
**5 in 1 Facial Cleansing Massager**

Product size: 11.4\*2.4\*2.2cm/12.9g  
Material: ABS  
Voltage: 1.5V  
Current: 2A  
Function: High-frequency vibration,  
intelligent induction  
Operated by 1\*AAA battery



**SR-SKM53**  
**Stainless Steel  
Facial Shovel Knife**

Stainless steel 304 + ABS  
Size of product:  
55\*65\*23mm



**SUPERTRX**

# CRYO FACIAL MASSAGE



**SR-SKM34**  
**Cryo Stick For Facial Massage**

Stainless steel 304 + Silicone  
Size of product: 63 x 135mm  
Size of set: 94\*120\*196mm  
Total weight: 417g  
Custom color for silicone



**SR-SKM14**  
**Cryo Freeze Massage Stick**

Stainless steel 304 + Silicone  
Size of product: 145 x 58mm  
Custom color for silicone



**SR-SKM49**  
**Cryo Stick For Facial Massage**

Stainless steel 304 + Silicone  
Size of product: 133\*40\*18mm  
Custom color for handle



**SR-SKM48**  
**Cryo Stick For Facial Massage**

Stainless steel 304 + Silicone  
Size of product: 5.8\*14cm  
Custom color for handle



**SR-SKM15**  
**Cryo Freeze Massage Stick**

Stainless steel 304 + Silicone  
Internal ice pack coolant  
Size of product: 145 x 58mm  
Custom color for silicone



**SUPERTRX**

# EYE TREATMENTS



## **SR-SA54 Eye Massager**

Product size:  
11.4\*2.4\*2.2cm/12.9g  
Material: ABS  
Voltage: 1.5V  
Current: 2A  
Function: High frequency  
vibration, intelligent induction  
Operated by 1\*AAA battery  
Package: color box



## **SR-SKM31 Cooling Eye Pad**

Stainless Steel 304  
Size of product: 53\*28mm  
Size of set: 131\*135\*21mm  
Total weight: 60g



## **SR-SKM30 Cooling Eye Pad**

Stainless steel 304 + Silicone  
Size of product: 55\*55\*15mm  
Size of set: 131\*135\*21mm  
Total weight: 104g  
Custom color for silicone



## **SR-SKM47 Cooling Eye Roller**

Stainless steel 304 + ABS  
Size of product: 3.3\*12cm  
Custom color for the handle





# SUPERTRX

# NAIL CARE



## SR-SA1101 Multifunctional 5 in 1 Nail Polishing Machine

Product size: 17\*3cm/81g  
Voltage/Current/Power 3V/0.23A/0.69W  
Speed: 12500r/min  
Motor life: Continuously working for 72 hours  
Operated by 2\*AA batteries  
Package: Card Insertion  
Material: ABS  
Accessories: 5pcs grinding heads

CE RoHS



## SR-SA2 Multifunctional 5 in 1 Nail Polishing Machine

Product size: 17\*3cm/81g  
Voltage/Current/Power: 3V/0.23A/0.69W  
Speed: 12500r/min  
Motor life: Continuously working for 72 hours  
Operated by 2\*AA batteries  
Package: Bubble shell packaging  
Material: ABS  
Accessories 5pcs grinding heads

CE RoHS



## SR-SA8 Multifunctional Nail Polishing Machine

Product size: 15.7\*2.7cm/388g  
Voltage/Current/Power V/0.1A/0.9W  
Speed: 0-13000r/min  
Rechargeable  
Accessories: 1 pc adapter, 6pcs grinding heads, 6pcs nail drill bits  
Package: color box  
Material: ABS



**SUPERTRX**

# NAIL/FOOT CARE



## **SR-SA29042 Baby Nail Trimmer**

Product size: 13.1\*4.1\*3cm/51g  
Voltage/Current/Power: 3V/0.12A/0.36W  
Speed: 5500rpm  
Operated by 2\*AA batteries  
Package: color box  
Material: ABS  
Accessories: 6pcs heads



## **SR-SFC28 8PCS Pedicure Set**

Product size: 27\*20\*22cm/240g  
Package: Box  
Material: ABS  
Accessories: 1pc Foot rub, 1pc coarse sandpaper, 1pc fine sandpaper, 1pc cuticle pusher, 1pc Nail clippers, 1pc nail file, 1pc Foot planer, 1pc blade



## **SR-TZ07 13 PCS Pedicure Set**

Product size of nail polisher: 16.5\*2.6cm/44g  
Nail Lamp: 13.1\*6.9\*2.6CM/39.9g  
Package: color box  
Material: ABS  
Accessories: 1pc nail polisher, 5pcs grinding heads, 1PC Nail Lamp, 1pcs data wire; polisher  
Operated by 2\*AA batteries  
Nail Lamp USB cable can be used after being inserted



## **SR-SKM50 Stainless Steel Foot File**

Stainless steel 304 + abrasive paper  
Size of product: 245\*45mm





**SUPERTRX**

# MAKE UP TOOLS



## **SR-Q7 Heated Eyelash Curler**

Color: Black, White, Pink  
Battery Capacity: 300mAh  
Charging method: Type-C;  
Operating Temperature : 3 Levels control  
(65°C, 75°C, 85°C) ±15°C  
Auto shutdown after 5 minutes



## **SR-CU1908 Heated Eyelash Curler**

Color: White ,Black  
Battery Capacity: 360mAh  
Charging method: USB  
Operating Temperature: 2 Levels  
control, Low level: 60°C-70°C ±20,  
High level: 75°C-85°C ±20%  
Auto shutdown after 5 minutes



## **SR-SZ8501 Makeup Brush Cleaner**

Product size: 7.6\*7.6\*15.7cm/202g  
Material: ABS+TPR  
Power: 5W  
Voltage: 5V  
Current: 2A  
Accessories: USB + instructions  
Operation mode: USB cable is plugged  
into the plug of current 2A for use.  
Package: color box



**SUPERTRX**

# MAKE UP STORAGE



**SR-DX12**  
**Makeup Bag With Light**

Available Color: Black/White/Pink



**SR-GZM12**  
**Makeup Bag With Light**

Available Color: Black/Pink/Brown



**SR-PD12**  
**Makeup Bag With Light**

Available Color: Black/Pink/Brown





**Mantara Ltd**



**Annie**

☎ +86-020-8769 0771

✉ annie@mantara-uk.com

📍 616 A Room, Fuli Tianhe Business Building, No.4, Huating road, TianHe, Guangzhou, China 510000

🌐 [www.mantara-uk.com](http://www.mantara-uk.com)