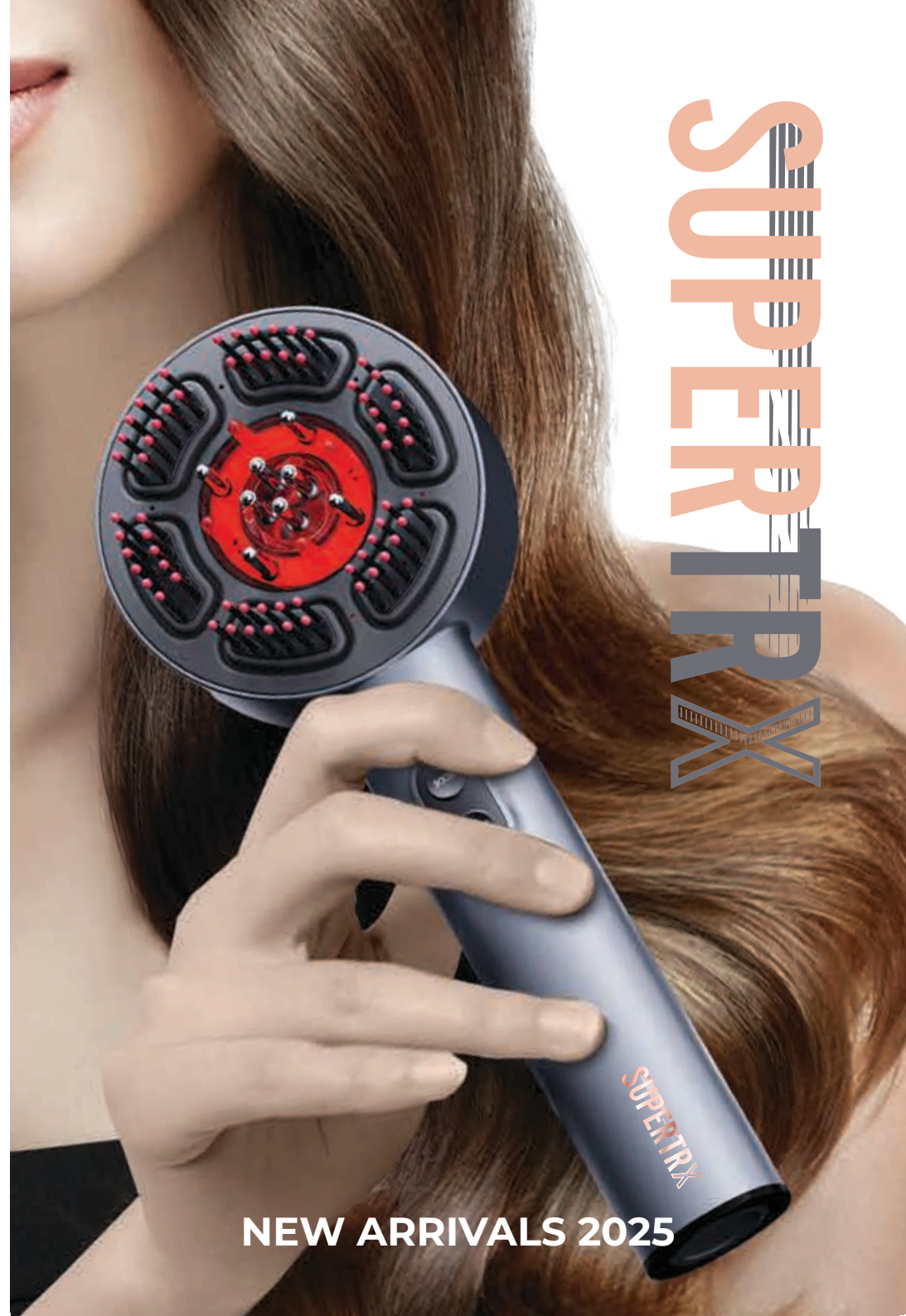




SUPERTRX



SUPERTRX

NEW ARRIVALS 2025



# SUPERTRX

## CONTENTS

**Hair Dryers P01-03**

**Multi- Hair Styling Tool P04-07**

**Thermal Brushes P08-09**

**Hair Straighteners P09-13**

**Curling Irons P14-16**

**Hair Oiling Tools P16-18**

**Skincare Devices P19-22**

**IPL Hair Removal P22-24**

**Mens Grooming P25-26**

**Storage Accessories P27-28**







# PROFESSIONAL HAIR DRYER

SR-FPV1

**Voltage:** 100VAC 60Hz / 125VAC 60Hz /  
220-240VAC 50Hz

**Power:** 1000W-1400W

**Noise:** 69dB

**Temperature Settings:** 40°C / 60°C /  
80°C / 100°C / 120°C

**Speed:** 8m/s / 12m/s / 16m/s

**Weight:** 350g

**Power Cable:** 2\*1.0mm<sup>2</sup>, Length: 3M

**Negative Ions:** 30,000,000





## MINI HAIR DRYER

SR-BY5977

**Motor:** BLDC

**Voltage:** 220-240V, 50-60Hz

**Power:** 1200W

**Speeds:** 2

**Heat Settings:** 3

**Features:** Ionic function, cool shot function, LED light ring, removable filter

**Cord:** BS plug, 2x0.75mm<sup>2</sup>, 1.8m black PVC round cord



## PROFESSIONAL HAIR DRYER

SR-8610

**Motor:** 36mm brushless (80,000 RPM)

**Weight:** 412g

**Noise:** <71dB

**Voltage:** 120-240V, 50-60Hz

**Power:** 2000-2200W

**Temperature Settings:** 60°C / 90°C / 120°C

**Wind Speed:** 18m/s

**Display:** Digital

**Features:** Built-in negative ions generator, cool & hot button

**Attachments:** 2 nozzles, 1 diffuser

Power Cord: 3M, BS plug



3 ATTACHMENTS



DRY | STYLE | DIFFUSE



FOLDABLE HANDLE

8 ATTACHMENTS



CURL | VOLUMIZE | SMOOTH | DRY

## BLDC HIGH SPEED FLEX STYLER

SR-CT301

**Voltage:** 100-240V, 50/60Hz

**Power:** 1400W

**Motor:** BLDC, 110,000 RPM

**Speed Settings:** 3

**Heat Settings:** 4

**Display:** LED temperature

**Handle:** Foldable

**Operation Life:** 1000 hours

**Power Supply:** Magnetic cable, BS plug

**Cord:** 1.8m PVC

**Attachments:** 9 heads

**Features:** Ionic function, electroplate painting, logo printing

**Packaging:** Magnetic box, blister, PE bag, shrink film





# MULTI-ATTACHMENT HAIR STYLING TOOL

SR-3136



3 ATTACHMENTS

SMOOTH | VOLUMIZE | DRY

**Voltage:** 220-240V, 50/60Hz

**Power:** 800-900W

**Motor:** Long-life DC motor

**Controls:** One-button for speed & temperature  
(fast/low, hot/warm/cool wind)

**Power Button:** 2-second press

**Indicator:** Temperature color light

**Attachments:** 3 heads (12/14/15cm)

**Safety:** Overheat protection system



**RoHS**



18 ATTACHMENTS



CURL | VOLUMIZE | SMOOTH | DRY

## FLEX AIR STYLER

SR-HT1202

**Voltage:** 220-240V, 50-60Hz

**Power:** 1200W

**Motor:** DC

**Temperatures:** 3

**Features:** Overheating protection, hanging loop

**Attachments:** 18 optional

**Cord:** 1.75m, BS plug



## 2 IN 1 HOT AIR BRUSH

SR-BY820

2 ATTACHMENTS

CURL | VOLUMIZE | SMOOTH | DRY



**Voltage:** 220-240V ~ 50-60Hz

**Power:** 1200W

**Rotation Control:** Switch for left/right turning & rotating attachments

**Attachments:**

40mm ceramic coating tong with brush cover

50mm ceramic coating tong with brush cover

**Temperature Control:** Adjustable with two settings

**Cool Shot Function:** Yes

**Cord:** 360° swivel cord

**Power Indicator:** Blue light turns off when powered down

**Additional Feature:** Spray handle for finishing



## THERMAL BRUSH

SR-HC131

**Display:** LCD digital temperature display

**Safety Feature:** 60-minute auto shut-off

**Voltage:** 100V to 240V / 50Hz-60Hz

**Bristles:** Heat-resistant poly-flex bristles

**Power:** 45W

**Temperature Range:** 160-220°C (320°F-430°F)

**Heater:** PTC heater





## DOUBLE-SIDED HAIR DRYER BRUSH

SR-QR502

**Voltage:** 220-240V, 50-60Hz

**Power:** 1000-1200W

**Switches:** 2 rotating (power/wind mode + heat control)

**Heating:** PTC heating, aluminum brush head & plate

**Features:** Double-sided styling, bristle hot air, PTC comb

**Cord:** 360° swivel, 1.8m PVC

**Optional:** Ionic function

**Packaging:** Magnetic box, plastic pack



## AIR STRAIGHTENER

SR-FP059

**Voltage:** 100-125VAC 60Hz / 220-240VAC 50/60Hz

**Power:** 1000W-1200W

**Settings:** Cool / Low / High

**Product Size:** 360mm x 35mm x 59mm

**Cord:** 2m, 360° swivel

**Optional:** Negative ion

**Color:** Customizable

**Packaging:** Standard box



## AIR STRAIGHTENER

SR-ZR933

**Voltage:** 220-240V, 50Hz

**Power:** 800-1000W

**Heating:** PTC

**Coating:** Ceramic

**Speed Settings:** 3

**Cord:** 360° swivel, 1.8m, H03VV-F 2\*0.75mm²

**Features:** Temperature control, hanging loop



## FOLDABLE STRAIGHTENING BRUSH

SR-HC313

**Battery:** 3200mAh

**Voltage:** DC 3.7V

**Power:** 38W

**Temperature Range:** 160°C ~ 200°C  
(320°F ~ 390°F)

**Auto Shut-Off:** 30 minutes

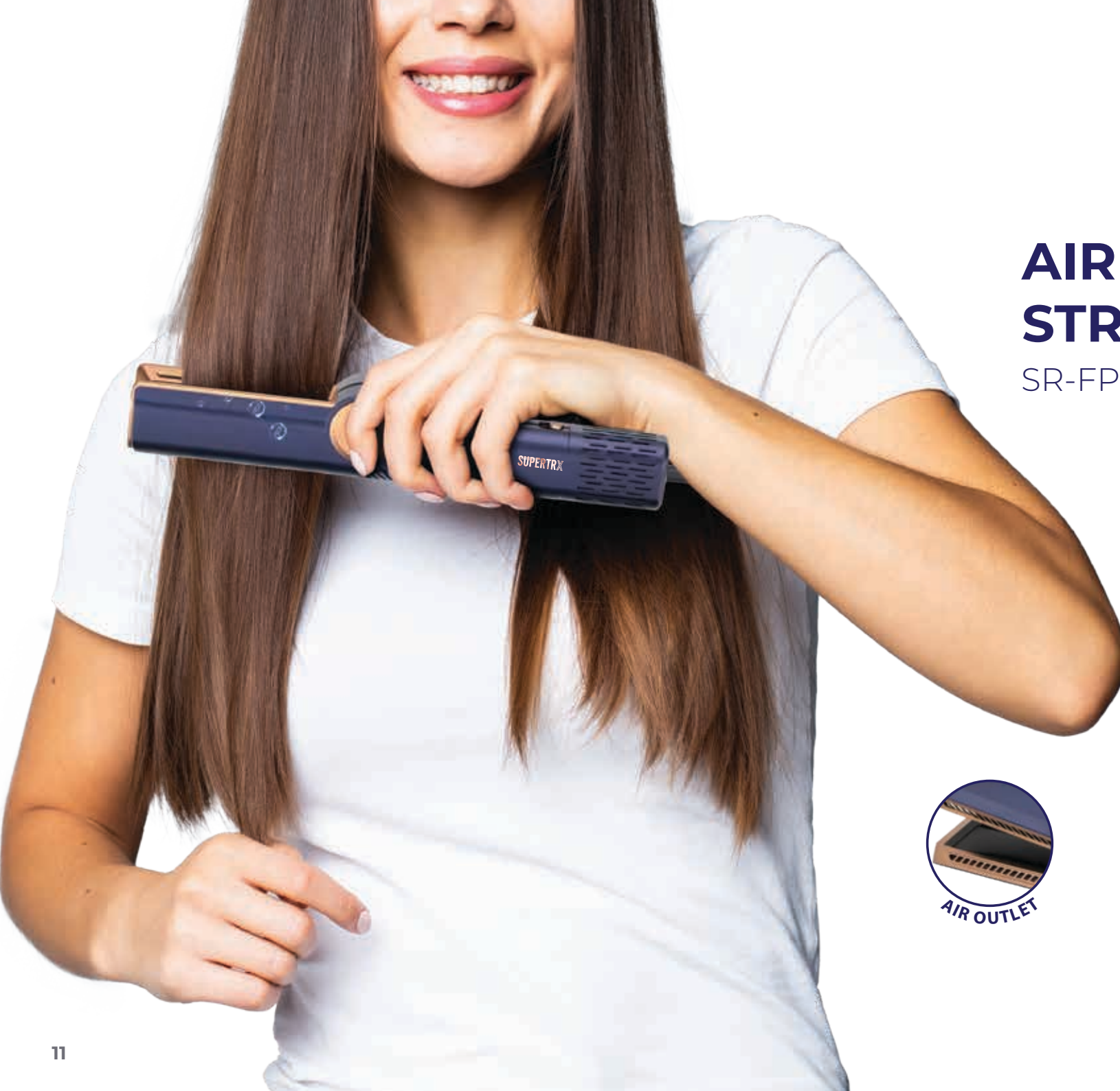
**Charging Port:** Type-C

**Product Size:** 112.1 x 58 x 22.8mm

**Heating Plate Size:** 75.08 x 9.6 x  
14.2mm







# AIR STRAIGHTENER

SR-FP107



**Voltage:** 110-120V AC / 220-240V AC,  
50-60Hz

**Power:** 1500W

**Motor:** BLDC

**Speed Settings:** 3

**Temperature Settings:** 3

**Cord:** 2.5m (customizable)

**Features:** Cool shot, sleep mode,  
dries + straightens simultaneously

**Motor Life:** 1000 hours

**Wind Speed:** 11.2 m/s

**Noise:** 88 dB

**Packaging:** Gift box



CE RoHS



## PROFESSIONAL HAIR STRAIGHTENER

SR-QY1124

**Voltage:** 100-240V, 50/60Hz  
**Power:** 55W  
**Temperature Settings:** 50°C ~ 230°C  
(270°F ~ 480°F)  
**Heating Element:** MCH  
**Heating Bar Size:** 36.5 x 100mm  
**Features:** Auto shut-off (1 hour),  
waterproof design, ergonomic handle,  
LCD display



## RECHARGEABLE HAIR CURLER

SR-EHD003

**Battery:** 3.6V, 21700 lithium, 5000mAh  
**Temperature Settings:** 140°C / 160°C / 180°C  
**Charging Time:** 4 hours  
**Usage Time:** ~20 minutes  
**Heater:** Film  
**Plates:** Ceramic coating (Dia22 x 120mm)  
**Extras:** Charging base + USB Type-C



## RECHARGEABLE HAIR STRAIGHTENER

SR-EHD002

**Battery:** 3.6V, 21700 lithium, 5000mAh  
**Temperature Settings:** 160°C / 180°C / 200°C  
**Charging Time:** 4 hours  
**Usage Time:** ~45 minutes  
**Heater:** Film  
**Plates:** Ceramic coating (23 x 90mm)  
**Extras:** Charging base + USB Type-C



## AUTOMATIC CURLING IRON

SR-FB2000

**Voltage:** 100-240V (dual voltage)  
**Temperature Settings:** 290°F / 350°F / 410°F  
**Heater:** PTC  
**Barrel:** 1" ceramic (151mm long)  
**Ready Time:** 60 seconds  
**Auto Shut-Off:** 30 minutes  
**Cord:** 2.5m PVC, BS plug  
**Packaging:** Magnet box + paper card



## WAVE STYLER

SR-QY2035

**Voltage:** 100-240V, 50/60Hz  
**Power:** 100W  
**Heater:** MCH  
**Temperature Settings:** 50°C ~ 230°C  
**Display:** LCD  
**Auto Shut-Off:** 1 hour  
**Features:** 3-barrel design, ergonomic handle  
**Barrel Size:** #22  
**Finish:** Titanium



## MAGIC HAIR CURLER

SR-M530

**Voltage:** 220V, 50/60Hz  
**Power:** 72W  
**Barrel:** 16mm with ceramic coating  
**Display:** LCD  
**Temperature:** 130°C ~ 230°C (270°F ~ 450°F)  
**Features:** 5 depth settings, auto shut-off (1 hour), cool tip  
**Cord:** 2.5m, 360° swivel, BS plug  
**Body:** PET with baking finish  
**Packaging:** Custom magnet box + paper tray



RoHS



## MINI HAIR CRIMPER

SR-YJ907

**Voltage:** 110-240V, 50/60Hz  
**Power:** 44-49W  
**Heater:** PTC  
**Plates:** Aluminum with ceramic coating  
**Temperature Settings:** 180°C / 200°C / 220°C  
**Features:** Auto shut-off (30 mins), ionic (optional), lockable handle  
**Cord:** 360° swivel



## MINI RED LIGHT OIL BRUSH

SR-RS03

**Features:** EMS, Vibration, LED Light Therapy, Waterproof  
**Oil Capacity:** 6ml  
**Battery:** 150mAh  
**Charging Time:** 1.5H



RoHS



Red Light Therapy  
Promotes Hair Growth



# RED LIGHT MASSAGE OIL BRUSH

SR-BK03



Red Light Therapy  
Promotes Hair Growth



## Features:

Kneading Massage, Red Light, Oil  
Dispensing

**Motor:** Brushless

**Battery:** 1800mAh



SUPERTRX



**Blue Light**  
Kills Acne Bacteria



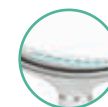
**Red Light**  
Collagen Production



**Purple Light**  
Reduces Inflammation



**Green Light**  
Reduces Hyperpigmentation



**Cyan Light**  
Heals and Treats  
Swollen Capillaries



**Orange Light**  
Stimulates Production of  
Skin Cells

# EMS FACE AND NECK LIFTING DEVICE

SR-HY69

**Material:** ABS

**Technology:** EMS, Vibration, Heated,  
LED Phototherapy

**Plug Type:** USB

**Battery Capacity:** 400mAh

**Charging Time:** 3H

**Rated Power:** 3W

**Product Size:** 139x90x38mm

**Product Weight:** 80g

**Packaging Size:** 170x120x50mm

**Packaging Weight:** 150g



**FC CE RoHS**



## RED LIGHT MASSAGE WAND

SR-1616

**Material:** Metal + PC plastic  
**Size:** 15.7 x 2.1 x 2.0cm  
**Color Box Size:** 18.6 x 11.5 x 5cm  
**Weight:** Net 126g / Gross 295g  
**Power:** Magnetic cable  
**Input:** 5V  
**Battery:** 350mAh



## RED LIGHT MASSAGE WAND

SR-1601

**Material:** Metal + PC plastic  
**Power:** Type-C rechargeable  
**Input:** 5V  
**Battery:** 350mAh  
**Package Includes:** 1 Device,  
 1 User Manual, 1 USB Cable



## PHOTOTHERAPY EMS WAND

SR-AODY02

**Plug Type:** EU, US, UK  
**Power Source:** USB Rechargeable  
**Target Area:** Face, Neck  
**Technology:** Vibration, Red Light, Blue Light  
**Rated Power:** 0.5W-2W  
**Battery Capacity:** 600mAh  
**Charging Interface:** Type-C  
**Product Size:** 28x39x162mm  
**Product Weight:** 90g



## MINI IPL HAIR REMOVAL

SR-H06

**Gears:** 8  
**Flashes:** 900000  
**Lighting:** Quartz Tube Lamp  
**Color:** White  
**LCD Display:** Yes  
**Plug Type:** UK, US, EU, AU





## ICE IPL HAIR REMOVAL DEVICE

SR-Z2

**Gears:** 9 gears

**Flashes:** 990000

**Lighting:** Quartz tube lamp

**Color:** Black&gold

**LCD display:** Yes

**Plug:** UK US EU AU

**ICE cooling:** Yes



LCD DISPLAY





**FC CE RoHS**

## DUAL TUBE IPL HAIR REMOVAL DEVICE

SR-D1

**Gears:** 9

**Flashes:** 990000

**Lighting:** Quartz Tube Lamp

**Color:** Black & Gold

**LCD Display:** Yes

**Plug Type:** UK, US, EU, AU



**FC CE RoHS**





# HAIR TRIMMER

SR-MC5169

**Body:** Ultra-lightweight and foldable for portability  
**Temperature Range:** 160°C–200°C (320°F–390°F)  
**Auto Shut-Off:** Activates after 30 minutes of no use  
**Charging Port:** Type-C  
**Battery Capacity:** 3200mAh  
**Rating:** DC 3.7V, 38W  
**Product Size:** 112.1 x 58 x 22.8mm  
**Heating Plates Size:** 75.08 x 9.6 x 14.2mm

 **RoHS EMC**



## COMPACT SHAVER

SR-MS209

**Charge Time:** 60 minutes  
**Working Time:** 60 minutes  
**Battery:** 400mAh Li-ion, Type-C  
**Operation:** Plug and play  
**Protection:** Overload protection  
**Button:** Light touch on/off button  
**Cap & Housing:** Magnetic protective cap with transparent housing  
**Waterproof Rating:** IPX6  
**Display:** Rolling light display  
**Color:** Metal & Injection



## HIGH SPEED MAGNETIC HAIR CLIPPER

SR-GB27

**Worldwide Voltage:** 100–240V, 50–60Hz  
**Battery:** 2000mAh Li-ion battery  
**Motor Speed:** 9,500–11,500 RPM (RPM increases with pressure)  
**Charging Time:** 3 hours  
**Working Time:** 2 hours  
**Blades:** 5Cr blade with DLC coating / Ceramic blade  
**Display:** ICD display  
**Charging Modes:** Charging dock & plug-in (2 interfaces)  
**Gift Box Includes:** 2 plastic covers, 4 combs (1mm, 2mm, 3mm, 4mm), Charging stand, Screwdriver, Cleaning brush, Oil, User manual, Adapter, Type-C cable



 **CE UKCA PS E RoHS EMC**

SUPERTRX

## MULTI- ATTACHMENT STORAGE RACK

SR-Y01H

Storage Holders & Racks

**Material:** Carbon Steel

**Single package size:** 37X17X12 cm

**Single gross weight:** 2.200 kg



## HAIR STYLER LEATHER CASE

SR-ACC02

**Material:** Leather

**Function:** Storage and dust prevention



## HAIR STYLER STORAGE BAG

SR-ACC05

**Style:** Portable handbag

**Purpose:** Multi purpose integration

**Material:** Polyester fabric +EVA



## HAIR STYLER STORAGE BAG

SR-CFJST

**Material:** PVC

**Function:** Storage and dust prevention

**Storage scenarios:** travel storage, bedroom storage



## HAIR STYLER STORAGE BAG

SR-BM01201019

**Material:** PU

**Function:** Multi purpose  
**Storage scenarios:** travel storage, makeup storage, bathroom storage









## ABOUT MANTARA LTD.

At Mantara Ltd., our mission is to empower individuals by providing them with high-quality, innovative beauty and self-care experiences that enhance their self-confidence and self-expression.

We are dedicated to delivering excellence through our comprehensive range of men's grooming products, women's hair removal solutions, hair dryers, hair curlers, and hair straighteners. Through our commitment to quality, customization, and global accessibility, we aim to be the trusted partner in elevating personal care experiences worldwide.

Mantara Ltd. provides more than a product, we provide an experience.



## ABOUT SHERAV HONG KONG LTD.

Sherav is a Hong Kong-established trading company with additional offices in Mumbai, India, as well as Guangzhou and Ningbo, China. The company's CEO, Ravi Daryanani, founded Sherav in 1997 and has since provided quality goods and services to Sherav's international customers in the United States, South America, Europe, and Africa.

Sherav was built on the foundational values of trust and transparency and specializes in providing conceptualization and product development from design to doorstep for small to medium enterprises, local brands, start-ups, e-commerce platforms, and renowned brands globally.

Sherav has ties to key players in a variety of industries and suppliers, including designers, importers, distributors, wholesalers, retailers, and e-commerce establishments across Asia—from Thailand and Indonesia to Taiwan and China—to ensure each order and product is specifically catered to the client's needs.

## CONTACT US

**RAVI DARYANANI**  
Managing Director/CEO  
✉ [ravi@sherav.com.hk](mailto:ravi@sherav.com.hk)

**ANNIE LAM**  
Sales Director  
✉ [annie@mantara-uk.com](mailto:annie@mantara-uk.com)

📍 Unit A 9th Floor, Yardley Commercial Building,  
No. 3 Connaught Road West,  
Sheung Wan,  
Hong Kong SAR

🌐 [www.mantara-uk.com](http://www.mantara-uk.com)  
[www.sherav.com.hk](http://www.sherav.com.hk)  
[www.sheravbm.com](http://www.sheravbm.com)

