



SUPERTRX



SUPERTRX

NEW ARRIVALS 2025



SUPERTRX

CONTENTS

Hair Dryers P01-08

Hair Styling Sets P09-12

Multi- Hair Styling Tool P13-19

Thermal Brushes P20-25

Hair Straighteners P25-31

Curling Irons P32-37

Hair Oiling Tools P38-42

Skincare Devices P43-50

IPL Hair Removal P51-57

Mens Grooming P63-76

Storage Accessories P77-78





PROFESSIONAL HAIR DRYER

SR-FPV1

Voltage: 100VAC 60Hz / 125VAC 60Hz /
220-240VAC 50Hz

Power: 1000W-1400W

Noise: 69dB

Temperature Settings: 40°C / 60°C /
80°C / 100°C / 120°C

Speed: 8m/s / 12m/s / 16m/s

Weight: 350g

Power Cable: 2*1.0mm², Length: 3M

Negative Ions: 30,000,000





MINI HAIR DRYER

SR-BY5977

Motor: BLDC
Voltage: 220-240V, 50-60Hz
Power: 1200W
Speeds: 2
Heat Settings: 3
Features: Ionic function, cool shot function, LED light ring, removable filter
Cord: BS plug, 2x0.75mm², 1.8m black PVC round cord



PROFESSIONAL HAIR DRYER

SR-8610

Motor: 36mm brushless (80,000 RPM)
Weight: 412g
Noise: <71dB
Voltage: 120-240V, 50-60Hz
Power: 2000-2200W
Temperature Settings: 60°C / 90°C / 120°C
Wind Speed: 18m/s
Display: Digital
Features: Built-in negative ions generator, cool & hot button
Attachments: 2 nozzles, 1 diffuser
Power Cord: 3M, BS plug



BLDC MOTOR PROFESSIONAL HAIR DRYER

SR-8600

Motor: 36mm BLDC Motor
Infrared: Tourmaline Infrared functions
Ions: positive and negative double ions
Light weight: 448g, lower noise: <71db
Ratings: 220-240V, 50-60Hz, 2200W-2400W
Motor Rotating Speed: 8,000RPM
Temperature: 60°C / 90°C / 120°C
Strong Wind speed: 18m/s (2 settings)
Display: Digital display
Attachment: 2 Nozzles and 1 diffuser.
Power cord: 3m power cord, BS plug.



PROFESSIONAL HAIR DRYER

SR-KF6030

Max Power: 1800W
Voltage: AC220-240V50/60HZ
Wire specification: 1.0 * 3M
Motor: 110000 RPM high-speed brushless motor
Heating frame: U-shaped wire



HANDS-FREE HAIR DRYER

SR-FPV3



Voltage: 100VAC 60Hz ;125VAC 60Hz; 220-240VAC 50Hz
Power: 1000W-1200-1400W
Motor: 1,100,00RPM Brushless High Speed Motor
LED Display: For Temp and speed
Temperature: 40-60-80-100-120°C;
Speed: 16m/s、 12m/s、 5m/s
Switch: cool shot
Power cord: 2 meters
Noise: 73 DB low noise
Packaging: Box
Negative Ions: 30,000,000



SUPERTRX



2 ATTACHMENTS

SMOOTH | DRY

PROFESSIONAL HAIR DRYER

SR-8955

Power: 1600-1800W

Voltage: 220-240V 50Hz

Motor: Professional long-life AC motor

Speed: 2

Heat Settings: 3

Attachment: two professional nozzles



HIGH-SPEED BLDC FOLDABLE HAIR DRYER

SR-LM303

DUAL VOLTAGE: 125V/200-240V AC

Power: 1400W for 125V & 1600W for 220V

Motor: 110K RPM BLDC

Display: LED digital display

Function: Back LED screen displays air, heat, ionic and 3 power setting, 3 heat, 3 air levels, Cool-shot, Negative ion generator

2 Injected Attachments: Diffuser and Nozzle

Cord: 2.5m PVC power cord, BS plug

Packaging: magnet box+plastic blister



2 ATTACHMENTS

DRY | STYLE | DIFFUSE



8 ATTACHMENTS

CURL | VOLUMIZE | SMOOTH | DRY

BLDC HIGH SPEED FLEX STYLER

SR-CT301

Voltage: 100-240V, 50/60Hz

Power: 1400W

Motor: BLDC, 110,000 RPM

Speed Settings: 3

Heat Settings: 4

Display: LED temperature

Handle: Foldable

Operation Life: 1000 hours

Power Supply: Magnetic cable,

BS plug

Cord: 1.8m PVC

Attachments: 9 heads

Features: Ionic function, electro-plate painting, logo printing

Packaging: Magnetic box, blister, PE bag, shrink film





2 ATTACHMENTS



SMOOTH | STRAIGHTEN

2-IN-1 HAIR STRAIGHTENER

SR-CI203

Voltage: 100-240V, 50/60HZ

Power: 40-80W

Heater: PTC heater

Coating: Ceramic coating

Temperature: LED digital display temperature from 150-230°C

Function: 60 seconds fast heat up, 60 minutes auto shut-off

Cord: 360° swivel cord, BS plug, 1.8M rubber cord

2 heads: A: Hair straightener
B: Hair straightener brush

Packaging: Normal painting, Logo printing, Rating label, Manual, Magnet color box and paper tray, shrink film, PE bag



HAIRSTYLING SET SMOOTHING BRUSH + CURLING IRON

SR-BY626 + 730C

Hair Straightening Brush

Voltage: 110V-240V, 50-60Hz

Power: 36W

Switch: With ON/OFF switch

Heater: With PTC heater

Function: Heating brush

Max temperature: 200°C +/- 15 °C

Cord: With 360° swivel cord sheet, BS plug & 2 X 0.5MM2x 1.8M TOTAL black PVC flat Cord

Handle: with black injection handle

LED digital Hair Curling Tong

Voltage: 110-240V~50-60Hz

Power: 40W

LED DIGITAL DISPLAY: Standby

display show "OFF", ON/OFF switch & Power off lighter

Tong: 25mm ceramic coating tong

Switch: 3 seconds Long press to be "ON"/"OFF", Press "+" & "-" to control temperature

6 temperature settings: 100°C-200°C

Heater: PTC heater

Function: Auto-shut off within 60 minutes, with cool tip, with Injection handle & ceramic coating tong

Cord: 360 degree swivel hook, BS plug & 2 X 0.5MM2x 1.8M TOTAL black PVC flat Cord





HAIRSTYLING SET STRAIGHTENER + AIR BRUSH

SR-BY812+677

Hair Straightener

Voltage: 110V-240V~50-60Hz

Power: 52W

Switch: ON/OFF switch

Heater: PTC heater

Digital temperature:

150°C, 170°C, 190°C, 210°C, 230°C

Display: Digital LED Temperature level display.

Handle: With lockable handle, with black matt injection Handle

Cord: 360 ° swivel cord sheet and hang loop, BS plug & 2 X 0.5MM, 2x 1.8M TOTAL black PVC flat Cord

Ceramic coating plates size: 25 x 110 MM

Hot Air Styler

Voltage: 220-240V~50-60Hz

Power: 600-700W

Power Control Switch: 0-1-2 settings

Key: Detachable Key

Cord: 360 degree Swivel cord, With 360 ° swivel cord sheet & Hang Loop

BS plug & 2 X 0.75MM2x 1.8M TOTAL black PVC flat Cord

Plates: With ceramic coating plates



HAIR STYLING SET HAIR DRYER + HAIR STRAIGHTENER

SR-KS2790+KS8600

DC Power: 1800W

Voltage: 220~240v 50/60Hz

Motor: DC motor

Speeds: 2

Temperature: 3 LEVELS

Material: Nylon

Color: injection

Length of cable: 1.8m

Manual: one page A4 paper

Power : 40W 220v 50/60Hz

Plate: aluminium spray color

Settings: 4

Heater: PTC

Max Temperature: 220°C

Total length of cable: 1.8m



SUPER BLDC HAIR STYLER SET

SR-HB200

5 ATTACHMENTS



Voltage: 220-240V, 50-60Hz

Power: 1000-1100W

Motor: High speed BLDC motor
(110,000RPM)

Outlet Temperature: 80-100°

Air speed: 19m/s

Functions: Removable inlet cover &
metal net filter

1 slide switch provide ON/OFF

1 Switch button Provide cool function

1 Switch button Provide 1-2-3 settings

With LED indicator light

(Blue for cool, orange for hot)

Cord: 360 swivel cord, Hanging loop,
Base on BS plug & total 1.8 cable.

Attachments: 5 detachable attachments,
half brush, round brush, magnetic dryer,
2 in 1 curler, flat brush

Packaging: Magnetic box packing



LVD

5 ATTACHMENTS



VOLUMIZE | CURL | SMOOTH | DRY



SUPER BLDC HAIR STYLER SET

SR-HB8201

Motor: BLDC motor, 110000 rmp

Voltage: 220-240v 50/60HZ

Power : 1300W

Heating settings: C-1-2-3

Speeds: 3

Functons: ionic for choice
the product can turn the head 90°

Cord: 360° swivel cord

Packaging: Magetic box packing



LVD



19 ATTACHMENTS



CURL | VOLUMIZE | SMOOTH | DRY

FLEX AIR STYLER

SR-HT8600

Voltage: 220-240V, 50-60Hz

Power: 800W

Motor: DC

Temperatures: 3

Features: Overheating protection, hanging loop

Attachments: 19 optional

Cord: 1.75m, BS plug



MULTI-ATTACHMENT HAIR STYLING TOOL

SR-3136



3 ATTACHMENTS

SMOOTH | VOLUMIZE | DRY

Voltage: 220-240V, 50/60Hz

Power: 800-900W

Motor: Long-life DC motor

Controls: One-button for speed & temperature
(fast/low, hot/warm/cool wind)

Power Button: 2-second press

Indicator: Temperature color light

Attachments: 3 heads (12/14/15cm)

Safety: Overheat protection system



RoHS



FLEX AIR STYLER

SR-HT1202

Voltage: 220-240V, 50-60Hz

Power: 1200W

Motor: DC

Temperatures: 3

Features: Overheating protection, hanging loop

Attachments: 18 optional

Cord: 1.75m, BS plug



2 IN 1 HOT AIR BRUSH

SR-BY820

2 ATTACHMENTS

CURL | VOLUMIZE | SMOOTH | DRY

Voltage: 220-240V ~ 50-60Hz

Power: 1200W

Rotation Control: Switch for left/right turning & rotating attachments

Attachments:

40mm ceramic coating tong with brush cover

50mm ceramic coating tong with brush cover

Temperature Control: Adjustable with two settings

Cool Shot Function: Yes

Cord: 360° swivel cord

Power Indicator: Blue light turns off when powered down

Additional Feature: Spray handle for finishing



THERMAL BRUSH

SR-HC131

Display: LCD digital temperature display

Safety Feature: 60-minute auto shut-off

Voltage: 100V to 240V / 50Hz-60Hz

Bristles: Heat-resistant poly-flex bristles

Power: 45W

Temperature Range: 160-220°C (320°F-430°F)

Heater: PTC heater





DOUBLE-SIDED HAIR DRYER BRUSH

SR-QR502

Voltage: 220-240V, 50-60Hz

Power: 1000-1200W

Switches: 2 rotating (power/wind mode + heat control)

Heating: PTC heating, aluminum brush head & plate

Features: Double-sided styling, Hot air bristle, PTC comb

Cord: 360° swivel, 1.8m PVC

Optional: Ionic function

Packaging: Magnetic box, plastic package



AIR STRAIGHTENER

SR-FP059

Voltage: 100-125VAC 60Hz / 220-240VAC 50/60Hz

Power: 1000W-1200W

Settings: Cool / Low / High

Product Size: 360mm x 35mm x 59mm

Cord: 2m, 360° swivel

Optional: Negative ion

Color: Customizable

Packaging: Standard box



AIR STRAIGHTENER

SR-ZR933

Voltage: 220-240V, 50Hz

Power: 800-1000W

Heating: PTC

Coating: Ceramic

Speed Settings: 3

Cord: 360° swivel, 1.8m, H03VV-F 2*0.75mm²

Features: Temperature control, hanging loop



FOLDABLE STRAIGHTENING BRUSH

SR-HC313

Battery: 3200mAh

Voltage: DC 3.7V

Power: 38W

Temperature Range: 160°C ~ 200°C
(320°F ~ 390°F)

Auto Shut-Off: 30 minutes

Charging Port: Type-C

Product Size: 112.1 x 58 x 22.8mm

Heating Plate Size: 75.08 x 9.6 x
14.2mm



SUPERTRX

HOT AIR STYLER

SR-ZR932

Motor: 100000 Rmp

Voltage: AC 220-240V 50Hz

Power: 800W

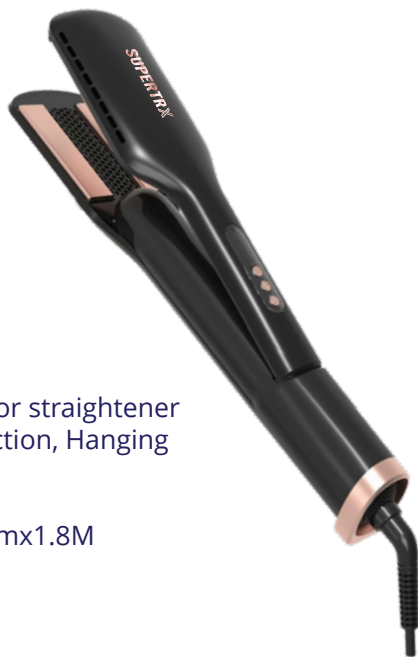
Heating Element: PTC

Coating: Ceramic

Function: Temperature control for straightener function, 3 speeds for dryer function, Hanging loop, injection color

Cord: 360° Swivel power cord

Power cord: H03VV-F 2*0.75mmx1.8M



3 IN 1 HOT AIR BRUSH

SR-QR501

Voltage: 220-240V 50-60Hz

Power: 1000-1200W

Temperature control: 0 - Cool wind, High speed and low heat - High speed and High heat settings
Function: Aluminum brush + Nylon handle + PTC heater

Features: Double-sided styling, hot air bristle, PTC Comb

Motor: DC

Cord: 360° Swivel cord, PVC power cord visible 1.80m

Packaging: Magnetic box + plastic package



HAIR STRAIGHTENER & MUSTACHE BRUSH

SR-ZR1016

Voltage: AC 100-240V~50/60Hz

Power: 45W

Heating element: PTC

Coating: Ceramic

Temperature control: 160-220°C

Display: LCD

Function: Auto shut-off, Hanging up loop

Cord: 360° Swivel power cord



3 IN 1 HAIR DRYER BRUSH

SR-HD369

Features: 2 inch, Straighten and dry hair in one PTC heater and PCB controller, Metal bristle

Voltage: 110V/240V, 50/60Hz

Power: 1000W

Max temperature: 210°C/410°F

3 settings: cold/low/high

Warranty: 1 year





THERMAL BRUSH

SR-QR002E

Voltage: 110-240V, 50-60Hz

Power: 50W

Features: Switch button, On/off function

Heater: PTC

Curling diameter: 38mm

Cord: PVC power cord visible 1.80m, 360° swivel power cord

Packaging: color box



PROFESSIONAL HAIR STRAIGHTENER

SR-QR109

Voltage: 110-240V, 50-60Hz

Power: 48W

Features: Temperature control with indicator light display with 5 heat settings: (150/170/190/210/230 °C) Ceramic coating floating aluminium plate On/off button

Plate size: 24x110mm

Heater: PTC heating element

Cord: 360° swivel power cord, PVC power cord visible 1.80m



TITANIUM HAIR STRAIGHTENER

SR-CO30

Display: FND

Temperature:

130-250 °C / 260-480 °F; 13 Gears

Heating rate: ≥ 220 °C 60s

Body size: 290*48*36mm

Plate size: 110*42mm

Features: Negative Ion

Auto switch off in 60 minutes

BS plug



PROFESSIONAL HAIR STRAIGHTENER

SR-HS104

Voltage: 100-240V, 50/60Hz

Power: 45W

Heater: PTC heater

Plates size: 25 x 95mm

Features: LED digital display temperature from 150-170-190-210-230 °C

With motor and fan for air-outlet function

1 hour auto shut off function

Titanium coating

Normal painting

Electroplate painting

Logo printing

Cord: BS plug, 1.8M rubber cord

Packaging: Rating label, Manual, Magnet color box and plastic blister, shrink film, PE bag





AIR STRAIGHTENER

SR-FP107



Voltage: 110-120V AC / 220-240V AC, 50-60Hz

Power: 1500W

Motor: BLDC

Speed Settings: 3

Temperature Settings: 3

Cord: 2.5m (customizable)

Features: Cool shot, sleep mode, dries + straightens simultaneously

Motor Life: 1000 hours

Wind Speed: 11.2 m/s

Noise: 88 dB

Packaging: Gift box



CE RoHS

PROFESSIONAL HAIR STRAIGHTENER

SR-6810

High temperature: Max to 240°C

Ions: With positive and negative double ions

Heater: Fast heating up MCH heater

Global Voltage: 100~240Vac 50~60Hz

Voltage: 100-240V, 50-60Hz.

Wide plates: 45x100mm.

Heater: MCH Heater element.

Features: 1 hour switch-off function.

Ceramic coating plates.

Fast heating up from 120°C-230°C.

Digital Temperature display.

Power Cord: 2.5M meter long power cord with BS plug.



PROFESSIONAL HAIR STRAIGHTENER

SR-QY1014

Voltage: 100/240 50-60Hz

Power: 35W

Plate size: 35*90mm

Heater: MCH heater

Plate: chrome titanium/tourmaline/ceramic

Features: Dual-used for hair straightening & curling of all kinds

of hair styling; 1 hour auto shut off

Cord: 360° swivel cord



PROFESSIONAL HAIR STRAIGHTENER

SR-QY1085

Double voltage: 100/240 50-60HZ

Power: 45-150W

Heater: Ceramic MCH heater

Plate size: 120X57 MM

Features: button to adjust temperature, 57 MM super wide plates and 120 MM long plate

Cord: swivel cord



WAVE STYLER

SR-BY760

Voltage: 110-240V~50-60Hz

Power: 80W

Heater: PTC

6 Levels temperature settings: 100°C-200°C

Features: Initial temperature display at 200°C

ON/OFF switch & Power off

2 seconds Long press to be "ON"/"OFF"

Press "+" & "-" to control temperature

Auto-shut off within 30 minutes

Lockable handle

Cord: 360° swivel hook, BS plug & 2*0.5mm

1.8M total PVC flat cord



PROFESSIONAL HAIR STRAIGHTENER

SR-QY1124

Voltage: 100-240V, 50/60Hz

Power: 55W

Temperature Settings: 50°C~230°C (270°F~480°F)

Heating Element: MCH

Heating Bar Size: 36.5 x 100mm

Features: Auto shut-off (1 hour), waterproof design, ergonomic handle, LCD display



WIRELESS HAIR STRAIGHTENER

SR-EHD002

Battery: 3.6V, 21700 lithium, 5000mAh

Temperature Settings: 160°C / 180°C / 200°C

Charging Time: 4 hours

Usage Time: ~45 minutes

Heater: Film

Plates: Ceramic coating (23 x 90mm)

Extras: Charging base + USB Type-C



WIRELESS HAIR CURLER

SR-EHD003

Battery: 3.6V, 21700 lithium, 5000mAh

Temperature Settings: 140°C / 160°C / 180°C

Charging Time: 4 hours

Usage Time: ~20 minutes

Heater: Film

Plates: Ceramic coating (Dia22 x 120mm)

Extras: Charging base + USB Type-C



AUTOMATIC CURLING IRON

SR-FB2000

Voltage: 100-240V (dual voltage)

Temperature Settings: 290°F / 350°F / 410°F

Heater: PTC

Barrel: 1" ceramic (151mm long)

Ready Time: 60 seconds

Auto Shut-Off: 30 minutes

Cord: 2.5m PVC, BS plug

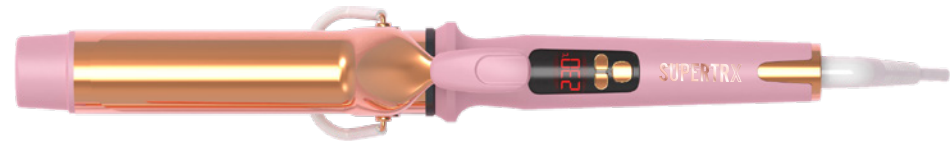
Packaging: Magnet box + paper card





PROFESSIONAL HAIR CURLER

SR-COC13



Dual Voltage: 110~240V 50/60Hz

Display: FND

Heater: Dual PTC Heater

Temperature: 60°C-230°C 60~230 °C , 18gears

Heating plate: Ceramics, Titanium, Aluminum, Tourmaline
High temperature resistant tip

Barrel size:

Φ38*150mm

Φ35*150mm

Φ32*150mm

Φ28*150mm

Φ38: 78W

Φ35: 70W

Φ32: 61W

Φ28: 56W

Body size: 345mm

Features: 90S Fast heat up to 180°C, Auto switch off in 60 minutes

60°C-180°C (110°F -335°F) ----Soft Hair

180°C-200°C (335°F -395°F)----Middle Normal Hair

200°C-230 °C(395°F -450°F)-----Thick&Hard Hair

Cord: 360°Swivel power cord



SUPERTRX

WAVE STYLER

SR-QY2035

Voltage: 100-240V, 50/60Hz
Power: 100W
Heater: MCH
Temperature Settings: 50°C ~ 230°C
Display: LCD
Auto Shut-Off: 1 hour
Features: 3-barrel design, ergonomic handle
Barrel Size: #22
Finish: Titanium



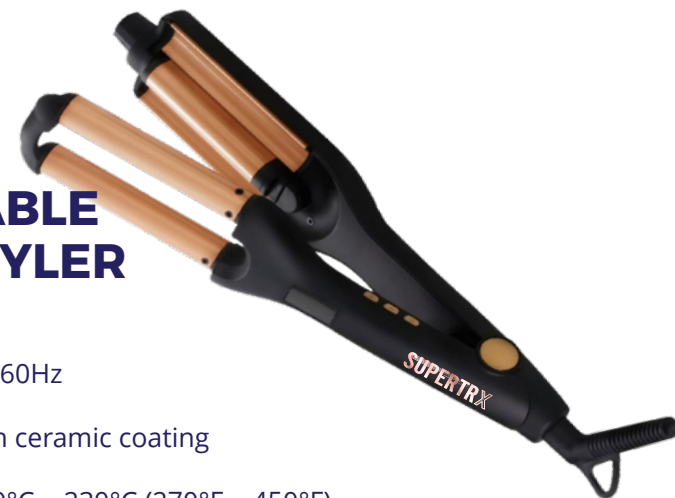
ADJUSTABLE WAVE STYLER

SR-M530

Voltage: 220V, 50/60Hz
Power: 72W
Barrel: 16mm with ceramic coating
Display: LCD
Temperature: 130°C ~ 230°C (270°F ~ 450°F)
Features: 5 depth settings, auto shut-off (1 hour), cool tip
Cord: 2.5m, 360° swivel, BS plug
Body: PET with baking finish
Packaging: Custom magnet box + paper tray



RoHS



MINI HAIR CRIMPER

SR-YJ907

Voltage: 110-240V, 50/60Hz
Power: 44-49W
Heater: PTC
Plates: Aluminum with ceramic coating
Temperature Settings: 180°C / 200°C / 220°C
Features: Auto shut-off (30 mins), ionic (optional), lockable handle
Cord: 360° swivel



WAVE STYLER

SR-QR668F

Voltage: 110-240V, 50-60Hz
Power: 115W
Temperature control by Digital Display: (100/ 120/140/160/180/210°C)
Heater: PTC heating element
Curling diameter: 25mm
Curling length: 122mm
Function: 2 heat-resistant tubes with nylon material for protection
On/off button, Automatic Lock function
Cord: 360° swivel power cord, Rubber power cord visible 1.80m
Packaging: Magnetic box + plastic package



RoHS



PROFESSIONAL HAIR CURLER

SR-QR667-19

Voltage: 110-240V ,50-60Hz

Power: 45W

Temperature control by LED indicator light:

130/150/170/190/200℃

Heater: PTC heating element

Tube diameter:19mm

Curling length:180mm

Function: switch button

Cord: 1.8m 360° swivel cord

Packaging: color box



PROFESSIONAL HAIR CURLER

SR-QR668-19

Voltage: 110-240V ,50-60Hz

Power: 45W

Temperature control by Digital Display: (100/

120/140/160/180/210℃)

Heater: PTC heating element

Curling diameter: 19mm

Curling length: 180mm

Function: Switch button, Automatic Lock function

Cord: 1.8m 360° swivel cord

Packaging: color box



Red Light Therapy
Promotes Hair Growth

MINI RED LIGHT OIL BRUSH

SR-RS03

Features: EMS, Vibration,
LED Light Therapy,
Waterproof

Oil Capacity: 6ml

Battery: 150mAh

Charging Time: 1.5H



MULTI FUNCTION MESSAGE COMB

SR-XYT0806

Material: silica gel +AVS

Charging method: Type-c

Battery capacity: 1500mA

Rated power: 5W

Rated voltage: 3.7V

Product weight: about 250g

Product size: 230*85*45mm

Noise standard: 50dB

Product function mode:

1. grasping and massaging;
2. red and blue light waves;
3. Essential oil can be added.
4. Whole machine waterproof

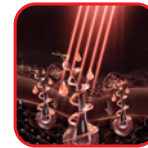
Timing: 10 minutes

Product accessories: charging cable, manual dust cover



RED LIGHT MASSAGE OIL BRUSH

SR-BK03



Red Light Therapy
Promotes Hair Growth



Features:

Kneading Massage, Red Light, Oil
Dispensing

Motor: Brushless

Battery: 1800mAh



SUPERTRX



HEAD MASSAGE HAIR COMB

SR-S918



Working Voltage: DC3.7V

Working Power: 5W

Charging Voltage: DC5V

Charging Current: 0.8A

Battery Capacity: 2000mAh

Power Connector: TYPE-C

Endurance: ≈3hours

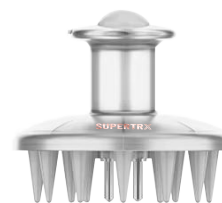
Charging time: ≈2.5hours

Function: High definition LED display, intelligent timing, handle decorative light, 3 modes of adjustment

Product size: 189*71*74mm

Net weight: 255g

Standard: GB4706.1-2005, GB4706.10-2008



HAIR SCALP MASSAGER

SR-LMZ370

Function: Scalp Massage, Oil Applicator

Material: Silicone + ABS

Color: Black/Pink/Clear



MASSAGE GUN

SR-MG001

Voltage: 7.4V

Charging Voltage: 5V

Rated Power: 20W

Speed: 1800-3500 rpm

Hitting Depth: 6cm

Strength: 5KG

Battery Capacity: 1200mah

Product Size: 17*15*5cm

Net Weight: 380G

Gross Weight: 520G

Color Box Size: 20*16*5cm

Accessories: 4 attachment heads



SUPERTRX



NIGHT-LIGHT MASSAGER

SR-OD385

Product Size: 71*71*98mm
Input: 5V 1A
Product Weight: 150g (Rechargeable built-in battery)
Suitable Batteries: Li-Polymer Battery 3.7V

CE RoHS FC  

OCTOPUS MINI MASSAGER

SR-OD380A

Product Size: 89*89*106mm
Input: 5V 1A
Product Weight: 165.4g(with rechargeable battery)
Suitable Batteries: Li-Polymer batteries
Material: ABS+Silicon

CE RoHS FC  

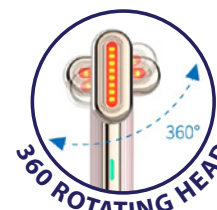


RED LIGHT MASSAGE WAND

SR-1616

Material: Metal + PC plastic
Size: 15.7 x 2.1 x 2.0cm
Color Box Size: 18.6 x 11.5 x 5cm
Weight: Net 126g / Gross 295g
Power: Magnetic cable
Input: 5V
Battery: 350mAh

FC CE RoHS   



RED LIGHT MASSAGE WAND

SR-1601

Material: Metal + PC plastic
Power: Type-C rechargeable
Input: 5V
Battery: 350mAh
Package Includes: 1 Device, 1 User Manual, 1 USB Cable

FC CE RoHS   



Blue Light
Kills Acne Bacteria



Red Light
Collagen Production



Purple Light
Reduces Inflammation



Green Light
Reduces Hyperpigmentation



Cyan Light
Heals and Treats
Swollen Capillaries



Orange Light
Stimulates Production of
Skin Cells

EMS FACE AND NECK LIFTING DEVICE

SR-HY69

Material: ABS

Technology: EMS, Vibration, Heated,
LED Phototherapy

Plug Type: USB

Battery Capacity: 400mAh

Charging Time: 3H

Rated Power: 3W

Product Size: 139x90x38mm

Product Weight: 80g

Packaging Size: 170x120x50mm

Packaging Weight: 150g



FC CE RoHS



RED LIGHT PANEL

SR-RB037

Power: MAX 4W

Feature: Brightening / Wrinkle Removal/ repair /oil-control; Smooth away fine lines and wrinkles effortlessly; Fade pigmentation and redness for a more even tone; Ease bodily inflammation, offering relief from discomfort; Pain-free, side-effect-free, and wire-free experience



RED LIGHT THERAPY UNDER-EYE PATCHES

SR-BI55

Rated power: 1W

Rated Voltage: 3.7V

Battery capacity: 30mAh

Working hours: the material 1.5H

Product size: 75x75x24mm

Product weight: ~84g



PHOTOTHERAPY FACIAL MASSAGER

SR-OD950



Whitening Mode

High-frequency
Vibration
+Yellow
Phototherapy



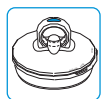
Heating Mode

Heating +
High-frequency
Vibration +
White Phototherapy



Lifting Mode

Heating + EMS +
Red Phototherapy



Anti-aging Mode

Heating + EMS +
Blue Phototherapy



Product Size: 89*89*106mm

Input: 5V 1A

Product Weight: 165.4g(with
rechargeable battery)

Suitable Batteries: Li-Polymer
batteries

Material: ABS+Silicon



Heating Mode

White light



Whitening Mode

Yellow light



Anti-aging Mode

Red light



Lifting Mode

Blue light

PHOTOTHERAPY FACIAL MASSAGER

SR-OD960

Product Size: 73*73*52mm

Product Weight: 70g

Battery: Li-polymer 3.7V

Power: 2W

Input: 5V 1A



SUPERTRX



Blue Light
Kill Acne Bacteria



Red Light
Boost Collagen



Colored Light
Treat Hyperpigmentation

PHOTOTHERAPY EMS WAND

SR-AODY02

Plug Type: EU, US, UK
Power Source: USB Rechargeable
Target Area: Face, Neck
Technology: Vibration, Red Light, Blue Light
Rated Power: 0.5W-2W
Battery Capacity: 600mAh
Charging Interface: Type-C
Product Size: 28×39×162mm
Product Weight: 90g



FACIAL ICE ROLLER

SR-J846Y

Material: silicone food grade material
Function: easy to use, multifunctional, one side can be used for cosmetic brush cleaning, one side used for face brush, and also an ice roller, the top steel for smooth massage
Packaging: color box



DOUBLE SIDED



FACIAL BRUSH



MAKE UP BRUSH
CLEANING PAD

5 IN 1 FACIAL CLEANSING MASSAGER

SR-SA2504

Product size: 7*4.7*13.2cm
Material: ABS/hardware
Power: 0.75w
Voltage: 3V
Current: 0.25A
Function: versatile combination; two-speed; Facial treatments
Speed: 12000r/min
Accessories: 5pcs brush heads
Battery: Operated by 2*AA battery
Package: color box+blister



5 ATTACHMENTS



MULTIFUNCTIONAL NAIL TOOL

SR-SA2

Product size: 17*3cm/81g
Voltage/Current/Power: 3V/0.23A/0.69W
Speed: 12500r/min
Motor life: Continuously working for 72 hours
Batteries: Operated by 2*AA batteries
Package: Bubble shell packaging
Material: ABS
Accessories: 5pcs grinding heads



5 ATTACHMENTS



PEDICURE SET

SR-TZ1204

Product size of nail polisher:

16.5*2.6cm/44g

Product size of foot grinder:

9.7*5.5*5.1cm/56g

Product size of nail clipper:

6*1.2cm/24g

Product size of Wooden skewers:

11.5*0.4cm

Product size of nail file: 13.5*0.3cm/3g

Package: color box

Material: ABS

Accessories: 1pc nail polisher, 6pcs grinding heads, 2pcs wooden skewers, 1pcs nail clippers, 1pc nail file, 1pc foot grinder polisher

Batteries: Operated by 2*AA batteries



CE RoHS FC



5 ATTACHMENTS



LIPSTICK SHAPE EPILATOR

SR-SFH07

Size: 3.5*10*17.5cm/78.5g

Material: ABS

Power: 5W

Voltage: 5V

Battery capacity: 100mAh, Operated by rechargeable lithium battery

Charging time: 2 hours

Using time: 8 hours

Accessories: USB cable+1pc cleaning brush

Package: color box



DUAL TUBE IPL HAIR REMOVAL DEVICE

SR-D1

Gears: 9

Flashes: 990000

Lighting: Quartz Tube Lamp

Color: Black & Gold

LCD Display: Yes

Plug Type: UK, US, EU, AU



DOUBLE-HEADED FACIAL HAIR REMOVER

SR-RS571

Function: Ergonomic & low noise design
IPX 5 Waterproof design
1x400mAh lithium battery
On/off switch with travel lock system
With 2*LED illuminator
2 rotary shaving blade

Detachable blade for easy cleaning

Accessories: type C recharge cable, protection cap, cleaning brush





ICE IPL HAIR REMOVAL DEVICE

SR-Z2

Gears: 9 gears

Flashes: 990000

Lighting: Quartz tube lamp

Color: Black & Gold

LCD display: Yes

Plug: UK US EU AU

ICE cooling: Yes



LCD DISPLAY



  **FC CE RoHS**

MINI IPL HAIR REMOVAL

SR-H06

Gears: 8

Flashes: 900000

Lighting: Quartz Tube Lamp

Color: White

LCD Display: Yes

Plug Type: UK, US, EU, AU



LCD DISPLAY



  **FC CE RoHS**



ELECTRIC SHAVER

SR-RFCDP20

Battery Capacity: Li-Ion battery 3.7V 800mAh

Motor: 3.2V DC motor

Charging time: approx. 90 minutes

Operating time: approx. 90 minutes

Function: Pet nail grinder + paw bimmer + hair bimmer

IPX 7 waterproof design

On/Off switch with 2 speeds

Ergonomically shaped handle

LED indicator

With type C charging port

Accessories: oil, cleaning brush, type C charging cable



ELECTRIC EYEBROW TRIMMER

SR-OD1402

Input: 5V-1A

Product Size: 15*1.5*1.5cm

Battery: 180mAh, 3.7V

Charging Time: Approx. 1.5 hours

Working Time: Approx. 0.5 hours

Function: Light Weight And Portable

Double Blades

High Speed Electric Motor

One Machine For Multiple Purposes



2 IN 1 EYEBROW TRIMMER NOSE HAIR

SR-SJ008

Product size: 2.4*7.8cm

Input voltage: 5v 3.7v

Battery capacity: 130mAh

Power: 0.5-1W



2 ATTACHMENTS



EYEBROW TRIMMING EYELASH CURLING MACHINE

SR-SJ002

Product size : 15.6*2.15cm

Input voltage: 5V

Operating voltage: 3.7V

Battery capacity: 140mAh

Power: 0.5-1W

Temperature range: 65-70-75°C





EYEBROW TRIMMING EYELASH CURLING MACHINE

SR-SJ01

Product size : 16*1.8cm
Rated voltage : 3.7v
Rated power : 5V



HEATED EYELASH CURLER

SR-M8

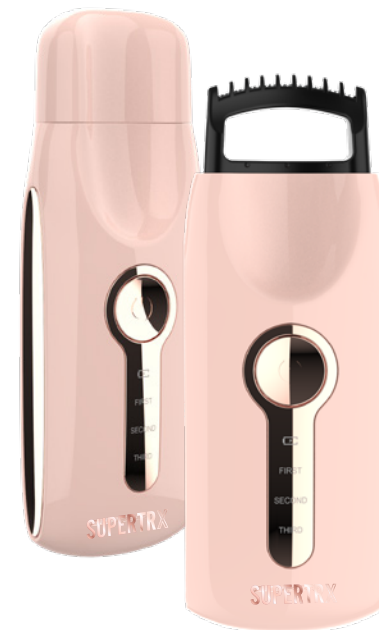
Charing: USB
4 Gear: 55℃±20% 65℃±20%
75℃±20% 85℃±20%
Battery: 230mAh
Item size: 126*87*41.8mm
Inter: 5V 1A
Working: 150-300mA
Input: 3.7V
Charging time: 1.5-2hours
Using time: 75-90min



HEATED EYELASH CURLER

SR-U19

Charging: Type-c
Display: LED
3 Gear: [65℃, 75℃, 85℃]±10℃;
Batetry: 300mAh
Item size: 107*38.2*19.3mm
Working: 0.15A-1.2A
Input: 3.7V
Charging time: 1.5-2hours
Using time: 75-90min



MAKEUP BRUSH CLEANER

SR-SZ8501

Product size: 7.6*7.6*15.7cm/202g
Material: ABS+TPR
Power: 5W
Voltage: 5V
Current: 2A
Function: automatic cleaning of
brushes,multiple washes
Accessories: USB+instructions
Package: color box





ELECTRIC EYELASH CURLER

SR-CU1908

Charging: USB
2 Gear: 65 °C ±20%, 85 °C ±20%,
Item size: 22*133*19mm
Battery: 360mAh
Working: 150-350mA
Input: 3.7v
Charging time: 1.5-2hours
Using time: 75-90min



HEATED EYELASH CURLER

SR-C01

Charging: type-c
3 Gear: 65 °C ± 20%, 75 °C ± 20%,
 85 °C ± 20%
Item size: 32*142*23mm
Battery: 200mAh
Working: 230-300mA
Input: 3.7v
Charging time: 1.5-2hours
Using time: 75-90min



SUPERTRX

HAIR BRUSH

SR-LJ002

Material: ABS+bristle+nylon teeth

Size: 25.5 * 7.5cm

Color: Injection molding



CURL DEFINING BRUSH

SR-LJ005

Material: PP+wheat straw+boar bristles+nylon teeth

Size: 24 * 6.5cm

Color: Injection molding



HAIR BRUSH

SR-LJ003

Material: ABS+bristle+nylon teeth

Size: 24.5*2.8cm

Color: Injection molding

HAIR BRUSH

SR-LJ007

Material: beech wood+nylon teeth

Size: 24.5 * 8.5cm

Color: Spray varnish



HAIR BRUSH

SR-LJ004

Material: ABS+bristle+nylon teeth

Size: 19.6 * 6.5cm

Color: Spray brown paint



HAIR BRUSH

SR-LJ008

Material: beech wood+nylon teeth

Size: 23.5*8cm

Color: Spray varnish

HAIR TRIMMER

SR-MC5169

Charge time: 1.5H,800mAh Lithium battery,Type-c

Function: Whole body washable IPX7

Cordless/Up to 160mins of runtime

Travel lock,cleaning reminder

Light touch on/off switch

Adjustable wheel limit comb (0.5-10mm,10.5-20mm)

Plug and play

Led digital display

Accessories: USB cable,Cleaning brush.limit comb,oil bottle

Color: injection color

 **RoHS EMC**



COMPACT SHAVER

SR-MS209

Charge Time: 60 minutes

Working Time: 60 minutes

Battery: 400mAh Li-ion, Type-C

Operation: Plug and play

Protection: Overload protection

Button: Light touch on/off button

Cap & Housing: Magnetic protective cap with transparent housing

Waterproof Rating: IPX6

Display: Rolling light display

Color: Metal & Injection



HIGH SPEED MAGNETIC HAIR CLIPPER

SR-GB27

Worldwide Voltage: 100-240V, 50-60Hz

Battery: 2000mAh Li-ion battery

Motor Speed: 9,500-11,500 RPM (RPM increases with pressure)

Charging Time: 3 hours

Working Time: 2 hours

Blades: 5Cr blade with DLC coating / Ceramic blade

Display: ICD display

Charging Modes: Charging dock & plug-in (2 interfaces)

Gift Box Includes: 2 plastic covers, 4 combs (1mm, 2mm, 3mm, 4mm), Charging stand, Screwdriver, Cleaning brush, Oil, User manual, Adapter, Type-C cable



 **CE UKCA PS E RoHS**

SUPERTRX



HAIR TRIMMER

SR-RFCD102

Battery Capacity: Li-Ion battery 3.7V 800mAh

Motor: 3.7V DC motor

2 guide comb attachments: 1-2mm & 3-4mm

Charging time: approx. 150 minutes

Operating time at full charge: approx. 90-120 minutes

Function: ergonomic & low noise design, waterproof design IPX7, cord or cordless using On/Off switch with 2 speed with LED indicator & travel lock function precision & detachable cutting set with \$-S Fixed blade and ceramic moving blade

Packaging: color box

Accessories: 2 guide combs, 1 oil, 1 cleaning brush, 1 USB charging cable, recharge base



HAIR CLIPPER

SR-MC5818

Battery: 18650 1200mAh

Charge time: 2.5H

Runtime: 200 minutes

Function: Type-C charging
Adjustable limit comb (3-21mm)
Ceramic moving blade
Travel lock

Multifunctional LED indicator

Plug and play

Accessories: USB cable, Cleaning brush, Oil bottle

Color: injection



HAIR TRIMMER

SR-RFCD108

Battery Capacity: Li-Ion battery 3.7V 600mAh

Motor: 3.7V DC motor

2 guide comb attachments: 1-2mm & 3-4mm

Charging time: approx. 90 minutes

Operating time at full charge: approx. 60-90 minutes

Function: ergonomic & low noise design, waterproof design IPX, cord or cordless using On/Off switch with 2 speed with LED display & travel lock function precision & detachable cutting set with \$-S Fixed blade and ceramic moving blade

Packaging: color box

Accessories: 2 guide combs, 1 oil, 1 cleaning brush, 1 USB charging cable, base



HAIR TRIMMER

SR-RFCD108N

Battery Capacity: Li-Ion battery 3.7V 600mAh

Motor: 3.7V DC motor

2 guide comb attachments: 1-2mm & 3.4mm

Charging time: approx. 90 minutes

Operating time at full charge: approx. 60-70 minutes

Function: ergonomic & low noise design, waterproof design IPX7

cord or cordless using

On/Off switch with 2 speed

with LED display & travel lock function

precision & detachable cutting set with \$-\$ Fixed blade and ceramic moving blade

Packaging: normal giftbox

Accessories: 2 guide combs, 1 oil, 1 cleaning brush, 1 USB charging cable, base





ELECTRIC SHAVER

SR-MS618

Charge time: 2H

Battery: 1400mAh Li-ion battery

Type-C anti-slip design

Motor: 9000+10%

Function: Metal housing(IPX6)

Magnetic protective cap

Cordless/Up to 150 mins of runtime

Constant output

Plug and play

Multifunctional Led digital display

Accessories: USB cable, Cleaning brush.

Color: Metal & Injection



ELECTRIC SHAVER KIT

SR-MS308

Input : 5V DC

Charge time: 1.5H(Type-C)

Working time: 100mins+

Battery: 3.7V 800mAh Litium

Function: waterproof IPX7

light touch

on/off button

LED display,

Travel lock(buzzer),

cleaning reminder

Plug and play

Pop-up side trimmer

Accessories: USB cable, Cleaning brush, Protective cap



5 ATTACHMENTS



HAIR TRIMMER

SR-RFCD105

Battery Capacity: Li-Ion battery 3.7V 600mAh

Motor: 3.7V DC motor

2 guide comb attachments: 1-2mm & 3-4mm

Charging time: approx. 90 minutes

Operating time at full charge: approx. 60-90 minutes

Function: ergonomic & low noise, waterproof design

IPX 5, cord or cordless using

On/Off switch with 2 speed

with LED display & travel lock function

precision & detachable cutting set with \$-S Fixed-

blade and ceramic moving blade

Packaging: nommal giftbox

Accessories: 2 guide combs, 1 oil, 1 cleaning

brush, 1 USB charging cable, recharge base



SUPERTRX

3 IN 1 MEN'S GROOMING KIT

SR-RFCD529

Battery Capacity: Li Ion battery 3.7V 320mAh

Motor: 3.2VDC motor

Charging time: approx. 90 minutes

Operating time at full charge: approx. 60 minutes

Function: Nose trimmer + hair trimmer + eyebrow trimmer

IPX 7 waterproof design On/Off switch

Ergonomically shaped handle LED indicator

Ceramic moving blade + \$.\$ fixed blade for hair trimmer

type C charging

Accessories: cleaning brush, 1 type C USB charging cable



3 ATTACHMENTS



HAIR TRIMMER

SR-GB13

Worldwide voltage: 100-240V 50/60Hz

Input: 5v---1000mA

Blade: T sharp stainless steel blade, gold cutter blade

Motor: professional 280# Motor, RPM 6800

Battery Capacity: 600mAh Lithium Battery,

Charging: 1.5h working: 1.5h

Function: Cord and cordless, LCD display, USB charging

Accessories: 4 combs (1/2/3/4mm)



HIGH SPEED MAGNETIC HAIR CLIPPER

SR-GB28

Battery Capacity: Li Ion battery 3.7V 320mAh

Motor: 3.2VDC motor

Charging time: approx. 90 minutes

Operating time at full charge: approx. 60 minutes

Function: Nose trimmer + hair trimmer + eyebrow trimmer

IPX 7 waterproof design On/Off switch

Ergonomically shaped handle LED indicator

Ceramic moving blade + \$.\$ fixed blade for hair trimmer

With type C charging port

Accessories: cleaning brush, 1 type C USB charging cable



HAIR TRIMMER

SR-GB14

Worldwide voltage: 100-240V 50/60Hz

Input: 5v---1000mA

Blade: Ultrathin U sharp stainless steel blade, gold cutter blade

Motor: professional 280# Motor, RPM 6800

Battery Capacity: 600mAh Lithium Battery

Charging: 1.5h working: 1.5h

Function: Cord and cordless, LCD display, With adjustable 4 levels, USB charging

Accessories: 4 combs (1.5/3/4.5/6mm)





HIGH SPEED HAIR TRIMMER

SR-GB32B

Worldwide voltage: 100-240V 50/60Hz

Blade: T-blade

Battery Capacity: 1200mAh Lithium Battery

Motor: 5800- 6800RPM

Charging: Charging:2.5h

Working: 2h

Input: 5V---1000mA

Function: Cord and cordless, Digital Display, USB charging



HIGH SPEED HAIR TRIMMER

SR-GB32A

Worldwide voltage: 100-240V 50/60Hz

Blade: T-blade

Battery Capacity: 1200mAh Lithium Battery

Motor: 5800- 6800RPM

Charging: 2.5h

Working: 2h

Input: 5V---1000mA

Function: Cord and cordless, Indicator Light, USB charging



HAIR TRIMMER

SR-FP818

Global Voltage: 110-240VAC 50/60Hz 5V~1A

Power: 7W;

Blade: Titanium ceramics;

Product Size: 163mm*43mm;

Battery: 3.7V 2200mA,

Charging Time: 3 Hour

Using Time: 4 Hour

Function: ON/OFF And SPEED Adjustment; LED Display;

4 Speed,800 Hours Long Life Time;

Charging/Power Dual-purpose;

Attachment: Comb 3-6-9-12mm & Cleaning Brush & Oil Bottle & Charging Dock;

Elmit comb: 3-6/9-12(mm);

Package box : Gift box



HAIR TRIMMER

SR-FP900

Global Voltage: 110-240VAC 50/60Hz 5V~1A

Power: 7W;

Blade: Titanium Ceramics;

Product Size: 180mm*32mm;

Battery: 3.7V1100mA,

Charging Time: 3 Hour

Using Time: 4 Hour

Attachment: Comb 3-6-9-12mm & Cleaning Brush & Oil Bottle,

Imit Comb: 3-6/9-12(mm);

Function: ON/OFF And SPEED Adjustment; Charging/Power Dual-purpose;

Package box : Gift box



DOUBLE EDGE RAZOR

SR-DB171

Feature: Three piece Design
Product size: 94.5mm length
Product weight: 71g weight
Material: Metal
Color: Silver Color



DOUBLE EDGE RAZOR

SR-T1B RG

Feature: Three piece Design
Product size: 11.5cm length
Product weight: 103.8g weight
Material: Metal
Color: Matte rose gold Color



DOUBLE EDGE RAZOR

SR-DB179

Feature: Butterfly twist to open Design
Product size: 9cm length
Product weight: 70g weight
Material: Metal
Color: Silver Color



DOUBLE EDGE RAZOR

SR-BR B3E

Feature: Three piece Design
Product size: 10.7cm length
Product weight: 93.7g weight
Material: Metal
Color: Matte rose gold Color



DOUBLE EDGE RAZOR

SR-T1C RG

Feature: Three piece Design
Product size: 11.7cm length
Product weight: 98g weight
Material: Metal
Color: Matte gold Color



DOUBLE EDGE RAZOR

SR-T1 RG

Feature: Three piece Design
Product size: 11.2cm length
Product weight: 91g weight
Material: Metal
Color: Rose gold Color





DOUBLE EDGE RAZOR

SR-T2 GM

Feature: Butterfly twist to open Design

Product size: 12.3cm length

Product weight: 123.2g weight

Material: Metal

Color: Gunmetal Color



DOUBLE EDGE RAZOR

SR-BR B3P

Feature: Three piece Design

Stainless steel +Brass metal handle

Product size: 10.62cm length

Product weight: 73g weight

Color: Silver Color



DOUBLE EDGE RAZOR

SR-BR B4D

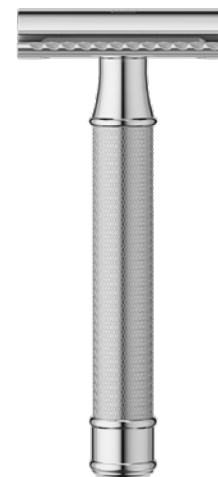
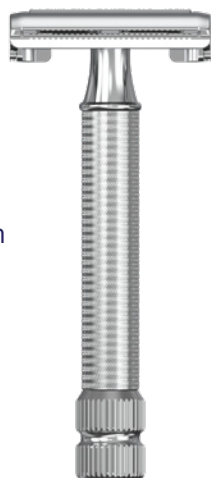
Feature: Butterfly twist to open Design

Stainless steel +Brass metal handle

Product size: 10.35cm length

Product weight: 81.1g weight

Color: Silver Color



DOUBLE EDGE RAZOR

SR-BR B1

Feature: Three piece Design

Stainless steel +Brass metal handle

Product size: 9.8cm length

Product weight: 77.6g weight

Color: Silver Color



MULTI- ATTACHMENT STORAGE RACK

SR-Y01H

Storage Holders & Racks

Material: Carbon Steel

Single package size: 37X17X12 cm

Single gross weight: 2.200 kg



HAIR STYLER LEATHER CASE

SR-ACC02

Material: Leather

Function: Storage and dust prevention



HAIR STYLER STORAGE BAG

SR-ACC05

Style: Portable handbag

Purpose: Multi purpose integration

Material: Polyester fabric +EVA



HAIR STYLER STORAGE BAG

SR-CFJST

Material: PVC

Function: Storage and dust prevention

Storage scenarios: travel storage, bedroom storage



HAIR STYLER STORAGE BAG

SR-BM01201019

Material: PU

Function: Multi purpose
Storage scenarios: travel storage, makeup storage, bathroom storage





ABOUT MANTARA LTD.

At Mantara Ltd., our mission is to empower individuals by providing them with high-quality, innovative beauty and self-care experiences that enhance their self-confidence and self-expression.

We are dedicated to delivering excellence through our comprehensive range of men's grooming products, women's hair removal solutions, hair dryers, hair curlers, and hair straighteners. Through our commitment to quality, customization, and global accessibility, we aim to be the trusted partner in elevating personal care experiences worldwide.

Mantara Ltd. provides more than a product, we provide an experience.



ABOUT SHERAV HONG KONG LTD.

Sherav is a Hong Kong-established trading company with additional offices in Mumbai, India, as well as Guangzhou and Ningbo, China. The company's CEO, Ravi Daryanani, founded Sherav in 1997 and has since provided quality goods and services to Sherav's international customers in the United States, South America, Europe, and Africa.

Sherav was built on the foundational values of trust and transparency and specializes in providing conceptualization and product development from design to doorstep for small to medium enterprises, local brands, start-ups, e-commerce platforms, and renowned brands globally.

Sherav has ties to key players in a variety of industries and suppliers, including designers, importers, distributors, wholesalers, retailers, and e-commerce establishments across Asia—from Thailand and Indonesia to Taiwan and China—to ensure each order and product is specifically catered to the client's needs.

CONTACT US

RAVI DARYANANI
Managing Director/CEO
✉ ravi@sherav.com.hk

ANNIE LAM
Sales Director
✉ annie@mantara-uk.com

📍 Unit A 9th Floor, Yardley Commercial Building,
No. 3 Connaught Road West,
Sheung Wan,
Hong Kong SAR

🌐 www.mantara-uk.com
www.sherav.com.hk
www.sheravbm.com

